

# UNITED STATES PUBLIC LAND SURVEY CORNER CERTIFICATE OF

Land Survey Monuments situated in Section 12, Township 74N, Range 18W, of the Fifth Principal Meridian, Marion County, Iowa.  
Previously recorded in --- in County Recorders Office.  
(book, page, document number, etc.)

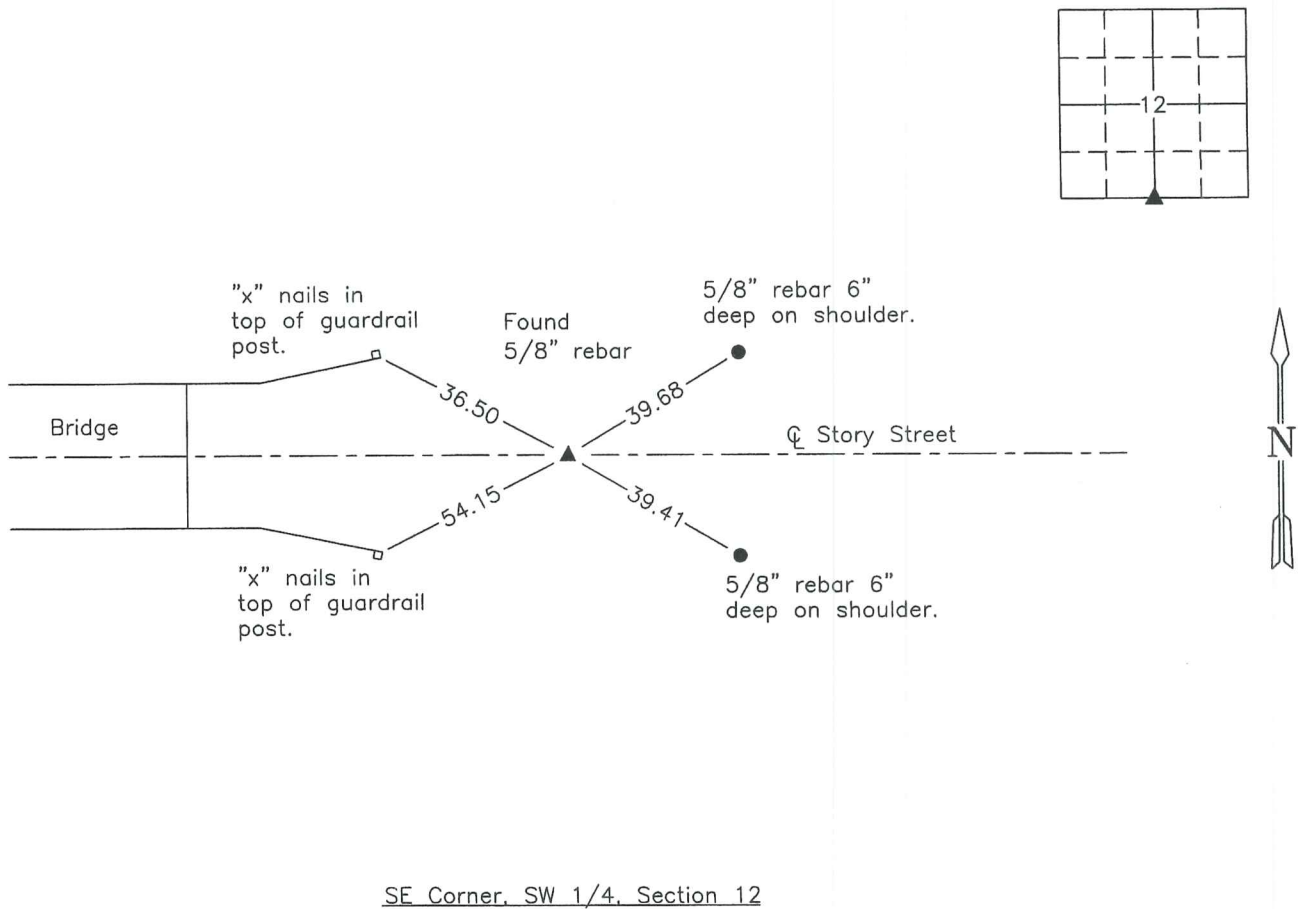
(Show reason for preparing this certificate, the evidence and detailed procedures used in establishing the corner positions and monumentation found or placed.)

Monument Description and Remarks: Found 5/8" rebar in centerline of Story Street 6" deep. Accepted position. Corner was reset by the Marion county Engineer's Office after bridge construction completed in 2009.

This corner was used to establish the W. 1/4 Corner of Sec. 12 for a Plat of Survey for Parcel A in the SW 1/4 of the SW 1/4 of Sec. 12.

## PLAN VIEW

(Show a minimum of three reference ties to durable physical objects, relevant monuments and physical conditions that will enable recovery of the corner.)



NOTE: ALL TIES TO BRASS DISK UNLESS NOTED.



I hereby certify that this land surveying document was prepared and the related survey work was performed by me or under my direct personal supervision and that I am a duly Licensed Land Surveyor under the laws of the state of Iowa.

Signature: J. Brian Morrissey Date: 12/30/14  
J. Brian Morrissey

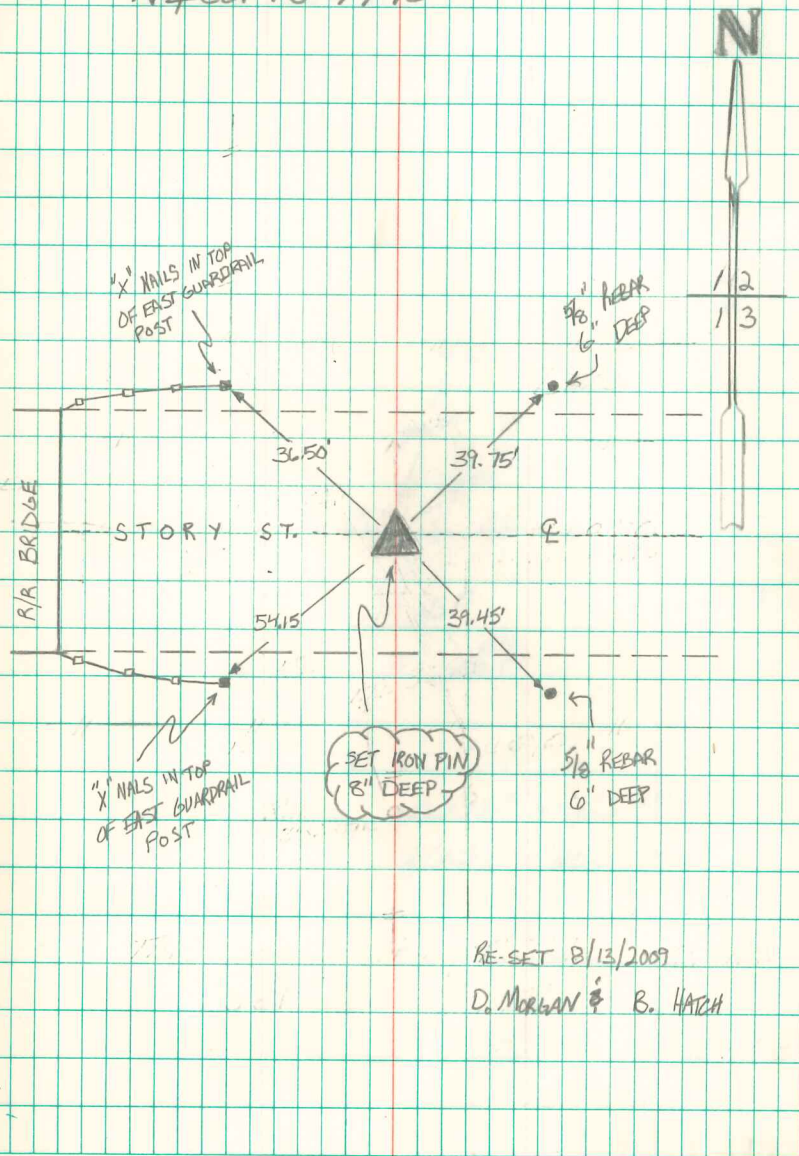
License number 7995.

My license renewal date is December 31, 2015

767-14-2

8/13/09 RE-SET STONE AFTER BRIDGEWORK. NO  
 TIES WERE LEFT. SET NEW CORNER USING  
 THE SURVEY FOR BRIDGE CONSTRUCTION.  
 SET NEW TIES + 5/8" IRON PIN 8"  
 UNDER E OF STORY STREET.

N 1/4 Cor 13-74-18



RE-SET 8/13/2009  
 D. MORGAN & B. HATCH