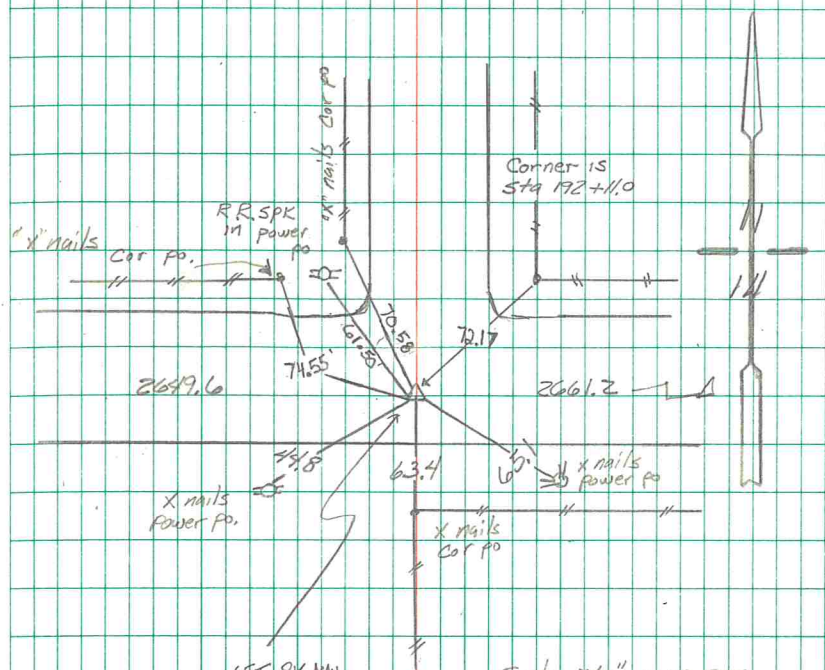


S 1/4 Cor Sec 11-74-18

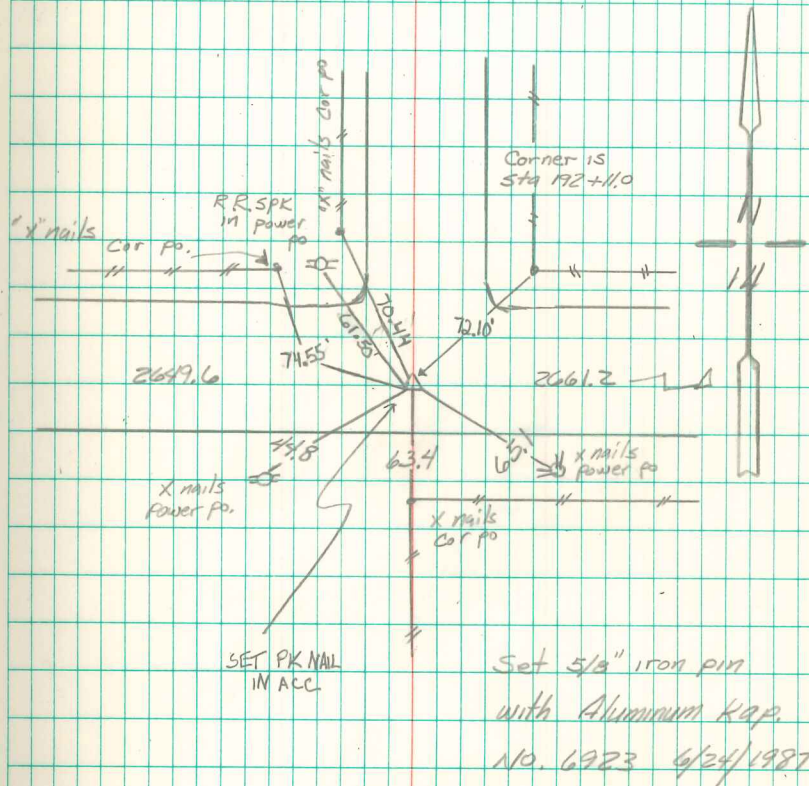


SET PK NAL  
IN ACC

Set 5/8" iron pin  
with Aluminum Kap.  
NO. 6923 6/24/1987

RE-TIE + NEW TIES SET 8/7/09  
D. MORGAN & B. HATCH  
7-10-2023  
SCHIPPERS & HATCH

S/4 Cor Sec 11-74-18



Set 5/8" iron pin  
with Aluminum Kap.  
No. 6923 6/24/1987

RE-TIE + NEW TIES SET 8/7/09  
D. MORGAN & B. HATCH