



Document 19-1044

Book 2019 Page 1044 Type CORNR Pages 1
Date 4/02/2019 Time 10:14 AM
Rec Amt \$7.00

KAREN SCHWANEBECK, RECORDER
MARION COUNTY IOWA

Prepared by Abie C. Davis, P.E. & L.S., 1428 Oregon St., Knoxville, IA 50138 (641) 842-5863

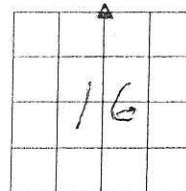
UNITED STATES PUBLIC LAND SURVEY CORNER CERTIFICATE OF

Land survey Monuments situated in Section 16, Township 74 N, Range 18 W, of the Fifth Principal Meridian, Marion County, Iowa.

Previously recorded in N/A in County Recorders Office.

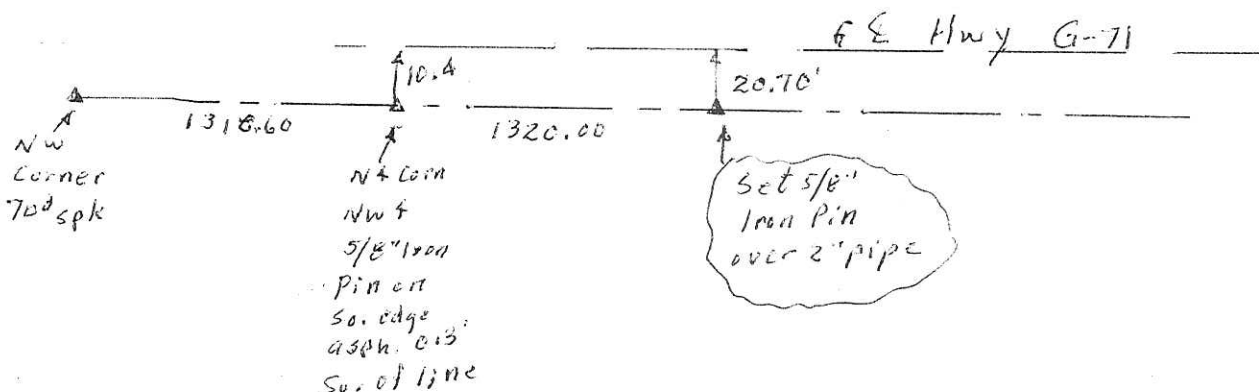
Show reason for preparing this certificate, the evidence and detailed procedures used in establishing the corner positions and monumentation found or placed.

Monument Description and Remarks: Found 2" Iron Pipe referenced on old IA D.O.T. road plans for Proj. # 753 for former state Hwy #156, now Hwy G-71. Set 5/8" Iron Pin w/cap #5594 above pipe and set out new ties



PLAN - VIEW

(Show a minimum of three reference ties to durable physical objects, relevant monuments and physical conditions that will enable recovery of the corner.)



I hereby certify that the survey work was completed and this land surveying document was prepared by me or under my direct personal supervision and that I am a duly licensed land surveyor under the laws of the state of Iowa

Signature: Abie C Davis

Date: 3/30/19 Reg. No. 5594

My license renewal date is December 31, 2019

SEAL



List Corners to be Indexed

Corners	Section	Twp	Range
N4	16	74N	18W

Pl. \$700 Cash - Ret Abie Davis

Established Corner,
Set CM. over 2" A tile on end.

T105 9.21-43
White & Dutton

N ¼ Cor. 16 T 44N R-18W
Sat 6.9-41
Dra: Notes Higdon

