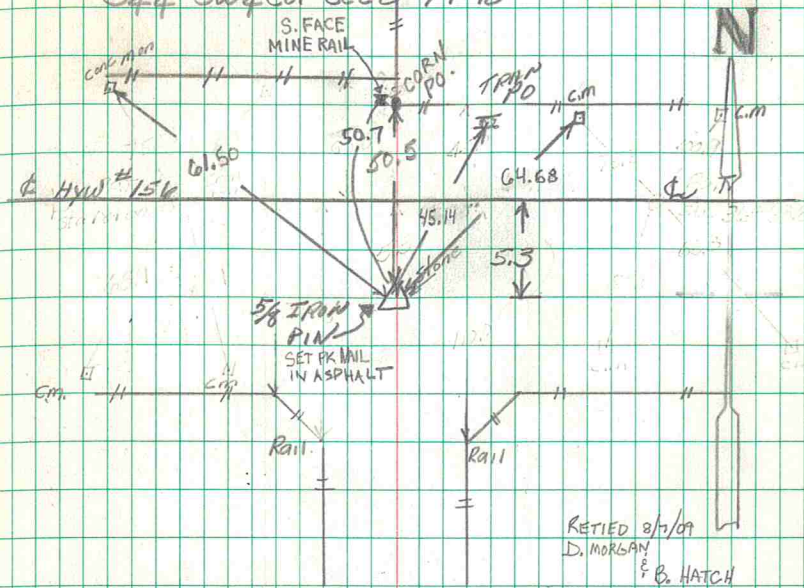


5/4 - SW 1/4 Cor sec 8-74-18



RETIED 8/1/09
 D. MORGAN
 & B. HATCH
 7-10-2023
 SCHIPPERS & HATCH

5/4 - SE 1/4 Cor sec 8-74-21

Sta 1/4 - SW 1/4 Cor Sec 8-74-18

