



Document 22-4374.

Book 2022 Page 4374 Type CORNR Pages 1
Date 8/12/2022 Time 10:56 AM
Rec Amt \$7.00



GARDEN & ASSOC.

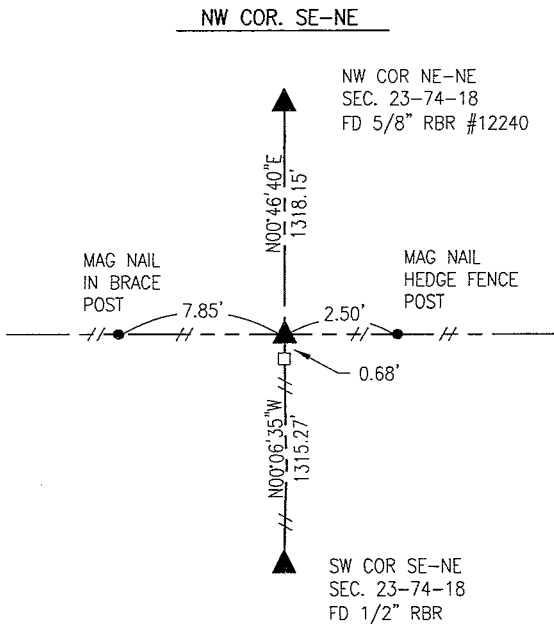
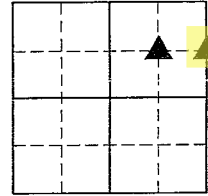
P.O. Box 451, Oskaloosa, Iowa 52577-0451 Phone: (641)672-2526

NAOMI ELLIS, RECORDER
MARION COUNTY IOWA

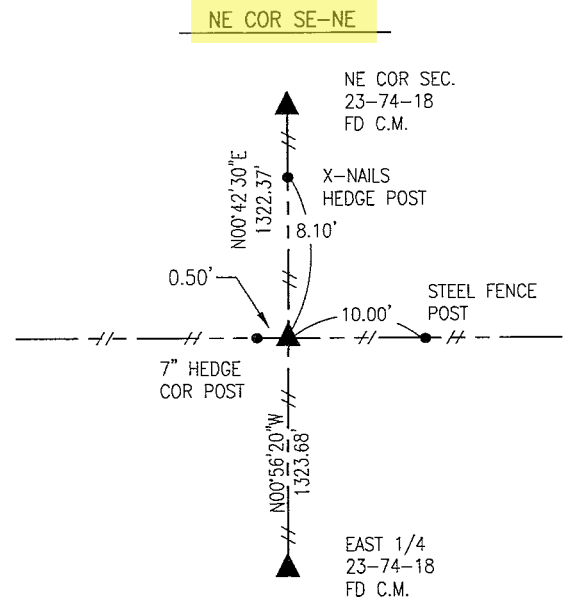
UNITED STATES PUBLIC LAND SURVEY CORNER CERTIFICATE
OF

Land Survey Monuments situated in Section 23, Township 74, Range 18, of the Fifth Principal Meridian, MARION County, Iowa. Previously recorded in BOOK 2022 PAGE 4223 in County Recorder's Office. Monument Description and Remarks:

THIS CORNER CERTIFICATE IS BEING FILED TO AMEND THE CORNER CERTIFICATE RECORDED IN BOOK 2022 PAGE 4223. THE PREVIOUS CERTIFICATE SHOWED AN INCORRECT LOCATION FOR THE CORNERS ON THE GRAPHICAL MAP TO THE RIGHT.



JULY 2022
PROBED AND SEARCHED AREA AROUND FENCE CORNER BUT DID NOT FIND ANY MONUMENTATION. HELD FENCE CORNER AS BEST EVIDENCE FOR CORNER LOCATION AND SET 5/8" REBAR #19960 ON NORTH SIDE.



JULY 1988
LS 5594 HELD 8" HEDGE CORNER POST AS PART OF THE SURVEY RECORDED IN BOOK 214 ON PAGE 80.

JULY 1994
LS 3754 SET A CAPPED 5/8" REBAR ON EAST SIDE OF 7" HEDGE CORNER POST ACCORDING TO COUNTY ENGINEER TIES.

JULY 2022
FOUND 5/8" REBAR WITH CAP # 3754 ON EAST SIDE OF CORNER POST. ACCEPTED AND TIED OUT CORNER.

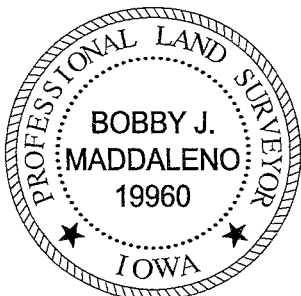
I hereby certify that this land surveying document was prepared and the related survey work was performed by me or under my direct personal supervision and that I am a duly licensed Professional Land Surveyor under the laws of the State of Iowa.

Bobby J. Maddaleno 8-8-22
Bobby J. Maddaleno, P.L.S. Date

License number: 19960

My license renewal date is December 31, 2023

SEAL

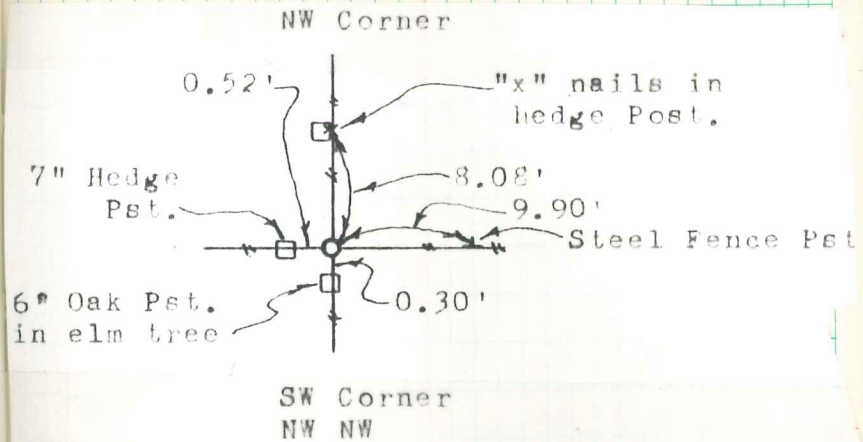


List Corners to be Indexed

Corners	Section	Township	Range
NW COR SE-NE	23	74	18
NE COR SE-NE	23	74	18

DA \$700 CHK. Ret. - G & A, env.

SW CORNER NW NW SEC 24-74-18



SET 7-13-94

David Hiller