

KAREN SCHWANEBECK, RECORDER  
MARION COUNTY IOWA

Prepared By: J. Brian Morrissey, Morrissey Surveying & Consulting, LLC, 1405 Hwy. G28, Otley, Ia. 50214, 515-480-2531

# UNITED STATES PUBLIC LAND SURVEY CORNER CERTIFICATE OF

Land Survey Monuments situated in Section 23, Township 74N, Range 18W, of the Fifth Principal Meridian, Marion County, Iowa.  
Previously recorded in n/a in the County Recorder's Office.  
(book, page, document number, etc.)

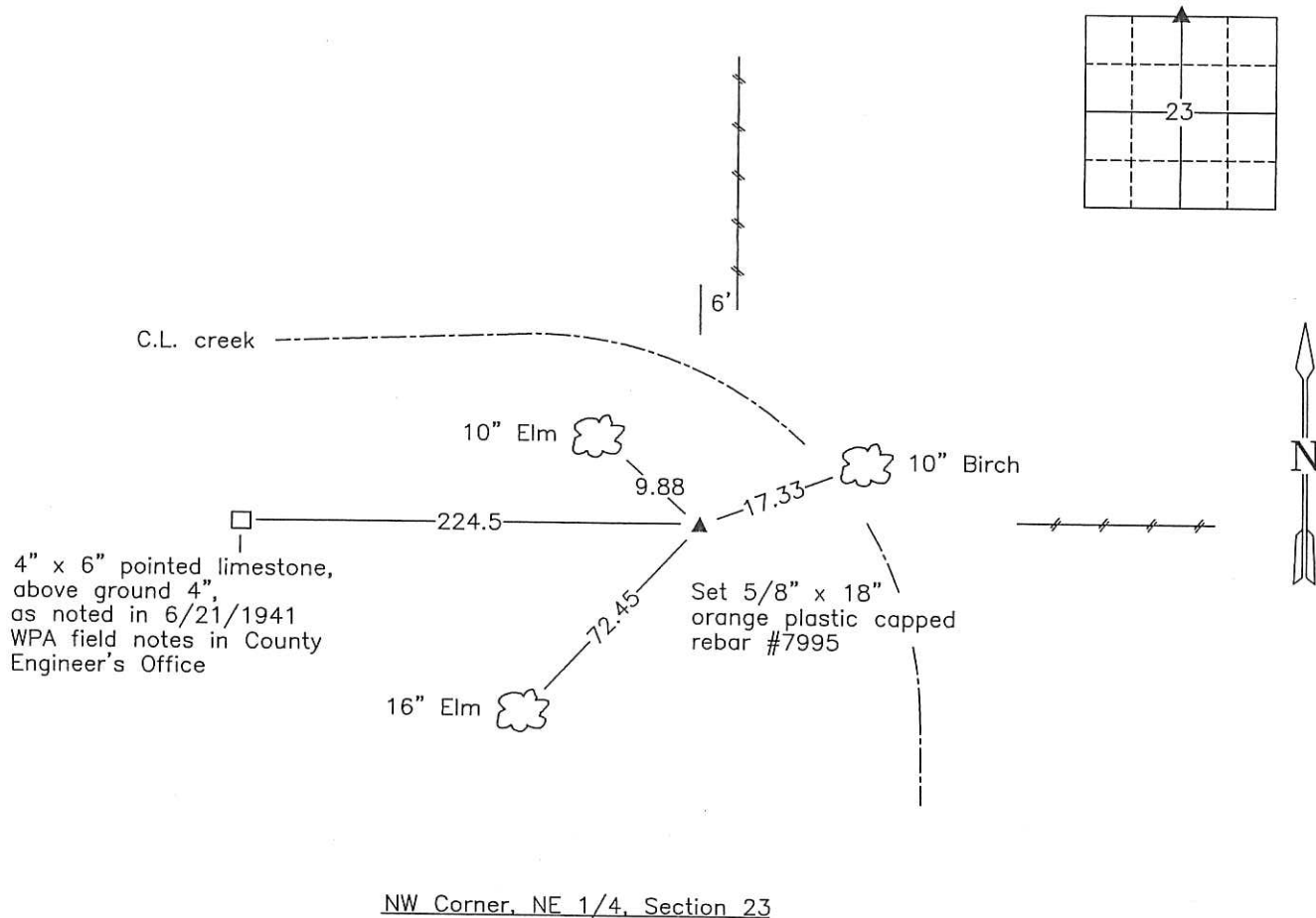
(Show reason for preparing this certificate, the evidence and detailed procedures used in establishing the corner positions and monumentation found or placed.)

Monument Description and Remarks: Set 5/8" x 18" rebar with orange plastic cap P.L.S. 7995 in line with fence and or fence remnants to east and a distance of 224.5 ft. from a found 4" x 6" pointed limestone, as per 6/21/1941 WPA field notes in the County Engineer's Office. No previous Certificate of Record.

This Corner was used for a Plat of Survey in the NE 1/4 of the NE 1/4 of Sec. 23, recorded in Bk. 2015, P. 960.

## PLAN VIEW

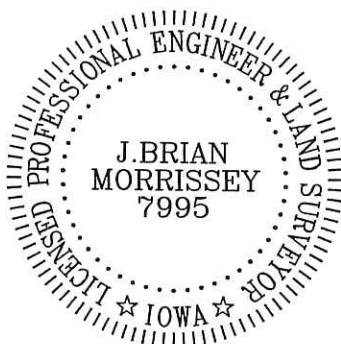
(Show a minimum of three reference ties to durable physical objects, relevant monuments and physical conditions that will enable recovery of the corner.)



NW Corner, NE 1/4, Section 23

Date of Survey: 4/17/15

NOTE: ALL TIES TO BRASS DISK UNLESS NOTED.



I hereby certify that this land surveying document was prepared and the related survey work was performed by me or under my direct personal supervision and that I am a duly Licensed Land Surveyor under the laws of the state of Iowa.

Signature: J. Brian Morrissey Date: 8/4/15  
J. Brian Morrissey

License number 7995.  
My license renewal date is December 31, 2015

802-15-1/1

1-1

Rd 1700 Ck - Ret Morrissey Surveying

Corner in Ditch. Found Watkins  
 witness Cor. (2-D Tile on end) at a Point  
 33' south of True Line between Sec. Corners.  
 Placed 1-2" round Tile over wit. Tile &  
 2" Gas P. Pe on North side of Tile.

set C.M. in True Corner 1-2" O  
 Tile & Broken Glass ware

62.8 S.W. of x Nails in 20" Br oak Tree  
 63.0 N.E. of 48" White Elm stump  
 45.6 S.E. of 20" White oak Tree

2166.0 West of sec. Cor.  
 2707.8 East of Sec. Cor.

N $\frac{1}{4}$  Cor 23-74-18

Set 6-12-41

Notes - E. R. Barker

Party - Elsberry, Nandell & Frazier

