

Found Stone and Tile

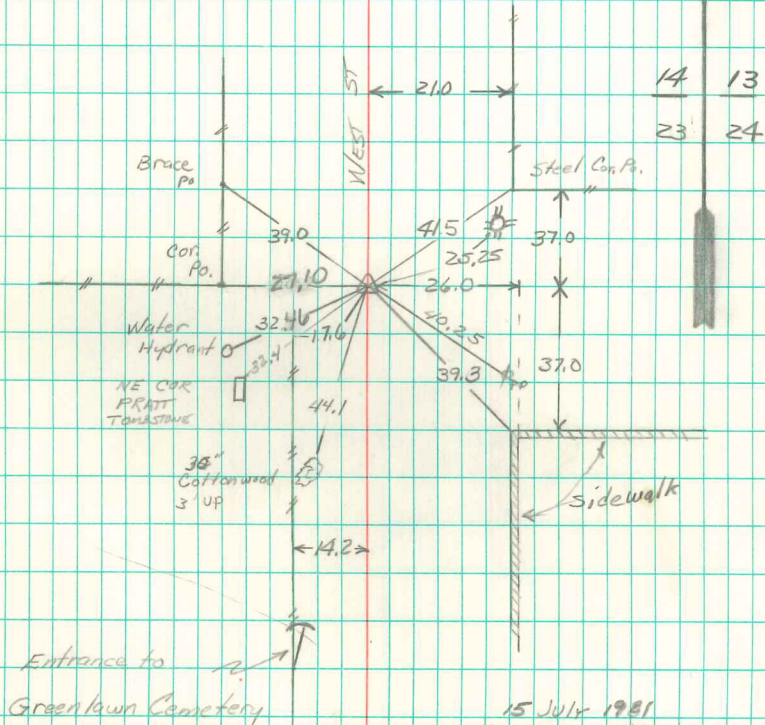
Set C.M. over Tile

N.E. Cor. 23-74-18

Set 6-8-39

Drai. Wignall

31



15 JULY 1981  
FOUND CM 4' DEEP  
SET 1" X 30" PIPE ON N.  
SIDE CM, SET 60" SPAC'S  
BLUE TOP OVER CM  
GARDEN ENDS

Retied 3/10/1992  
ALIE PAULS  
11/14/00