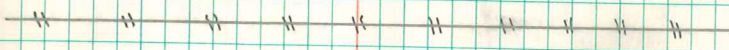
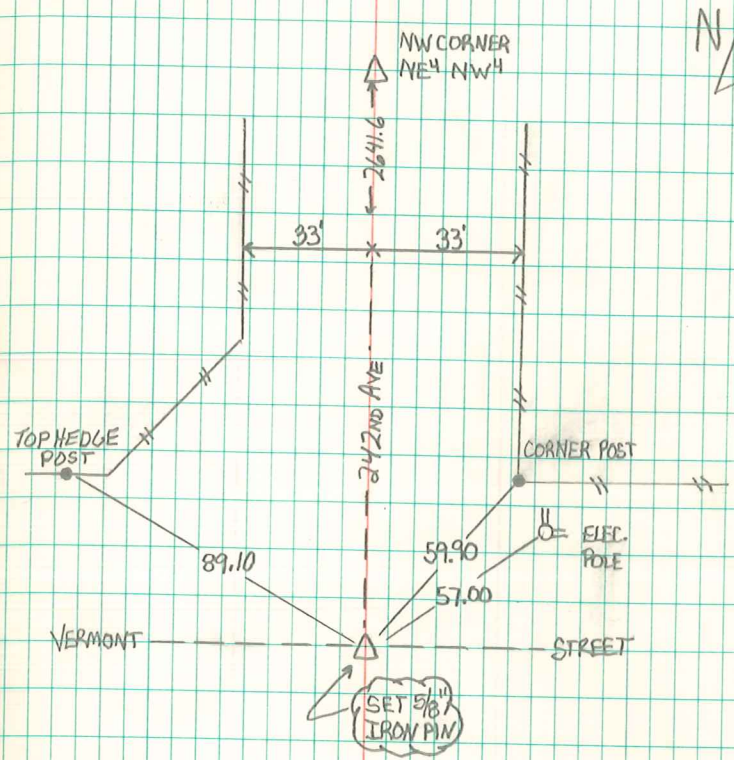


SW CORNER SE⁴NW⁴ SECTION 25-74-18



FOUND IRON PIN BURIED IN MID 50'S CONSTRUCTION PROJECT.
 COUNTY SURVEY CREW "FOUND STONE AND SET IRON PIN."
 WE SET NEW IRON PIN WITH CAP OVER OLD IRON PIN AND
 SET OUT NEW TIES.

11-22-11
 ABIE C. DAVIS