

E 1/4 Sec 27, T 74N R 18W

Dr. Thomas

Set 12-2-59

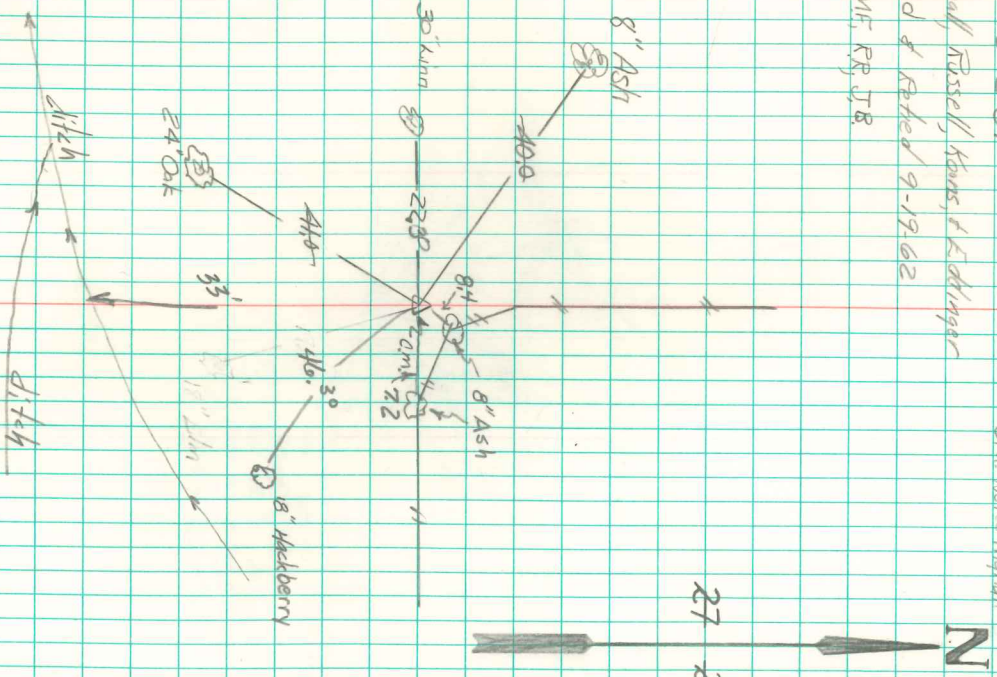
Dr. Walter Kynall

Wynand Russell, Sons & Edinger

Found & Rebed 9-19-62

RCV. MF, RP, JR

27 26



End Cove. Mon Flash y iron pipe on N side, set 1 1/2" pipe on S side 8" above ground.

Walter DAVIS  
3/29/58

Set CM over Broken tile placed pipe on N.S.