

E 1/4 Cor. 2 T. 74N R. 18W

Found Iron pipe (Orig. Cor.) in ditch.

Set C.M. as Witness Cor. 33.0

N. of True Cor.

Placed broken crockery under C.M.

- 0.5 S. of 4" Oak Cor. post.
- 32.2 S.E. of 8" Twin Locust
- 75.0 S.E. of 18" Ash
- 47.0 N.W. of E. Wing Conc. Culvert
- 52.2 N.W. of W. Wing Conc. Culvert
- 33.0 N. of Gas Pipe (True corner)

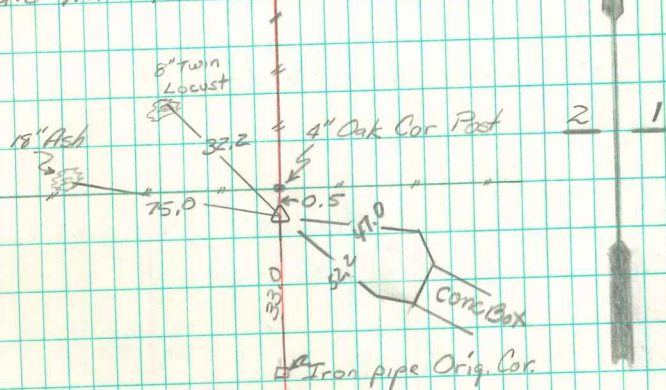
E 1/4 Cor 2 T. 74N R. 18W

Set 12-15-39

By Howard Kennedy

Sam Wells

Hale Mitchell



Ref to Witness Cor 30.0 S. of orig. Cor.

