

Spiral Curves on Bridges

Spiral curves should be avoided on bridges. The designer should select a curve radius which doesn't require a spiral curve. The designer should contact the Methods Section for additional assistance on removing spiral curves from bridges.

Plan Curve Data

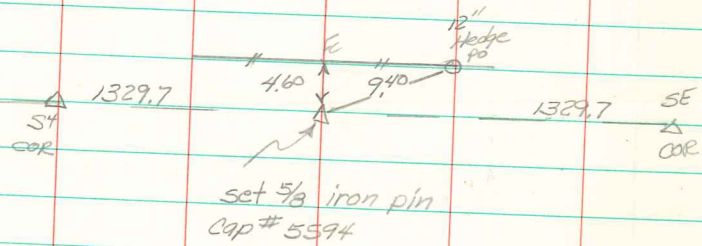
Provide the following Spiral Curve Data on the plan and profile sheets for each spiral curve: Δ , E_s , T_s , L_s , θ_s , P , K , X_c , Y_c , LT , ST , LC , and SCS PI stationing.

Curve data, superlevation data, and coordinates of each control point should be shown within the G sheets on tabulations 101-16 and 101-17.

Spiral curve data should be displayed in following order on plan sheets:

- Δ =
- Theta =
- L_s =
- T_s =
- E_s =
- P =
- K =
- X_c =
- Y_c =
- LT =
- ST =
- LC =

SW COR SE⁴SE⁴
 SEC 35-74-18



Abie Davis
 11/19/05