

Restablished on Line North &
South mid Point between to
S. & East. Double the $\frac{1}{4}$ to South

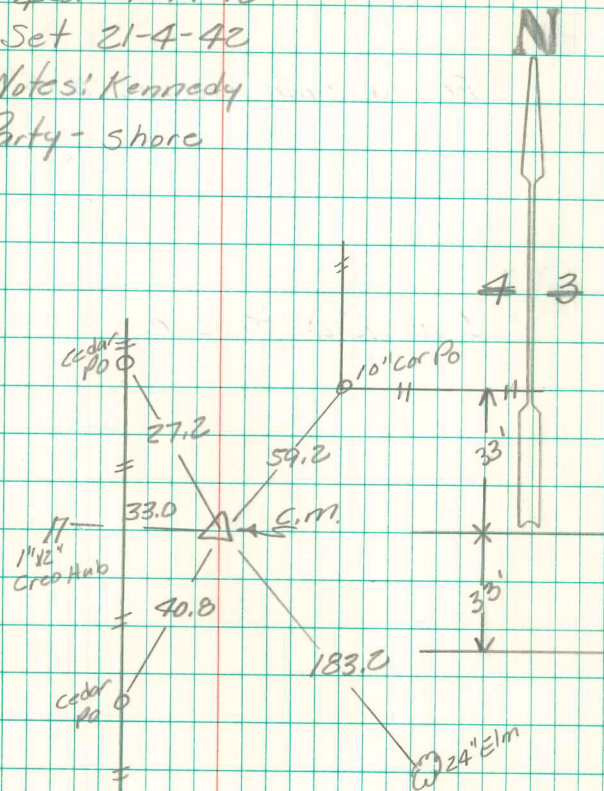
Put $1\frac{1}{2}$ " D Tile at base of C.M.

Put small sand strike on
Top C.M.

E $\frac{1}{4}$ Cor 4-74-18

Set 21-4-42

Notes: Kennedy
Party - shore



Tics OK = 5-13-48