

KAREN SCHWANEBECK, RECORDER
MARION COUNTY IOWA

Prepared by: Abie C. Davis, P.E. & L.S., 1428 Oregon St., Knoxville, Iowa 50138 Phone: (515) 842-5863

UNITED STATES PUBLIC LAND SURVEY CORNER CERTIFICATE

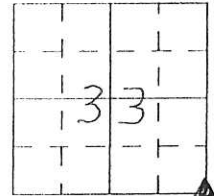
SLS19-94

Land survey Monuments situated in Section 33, Township 75N, Range 18W, of the Fifth Principal Meridian, Marion County, Iowa.

Previously recorded in N/A in County Recorders Office.

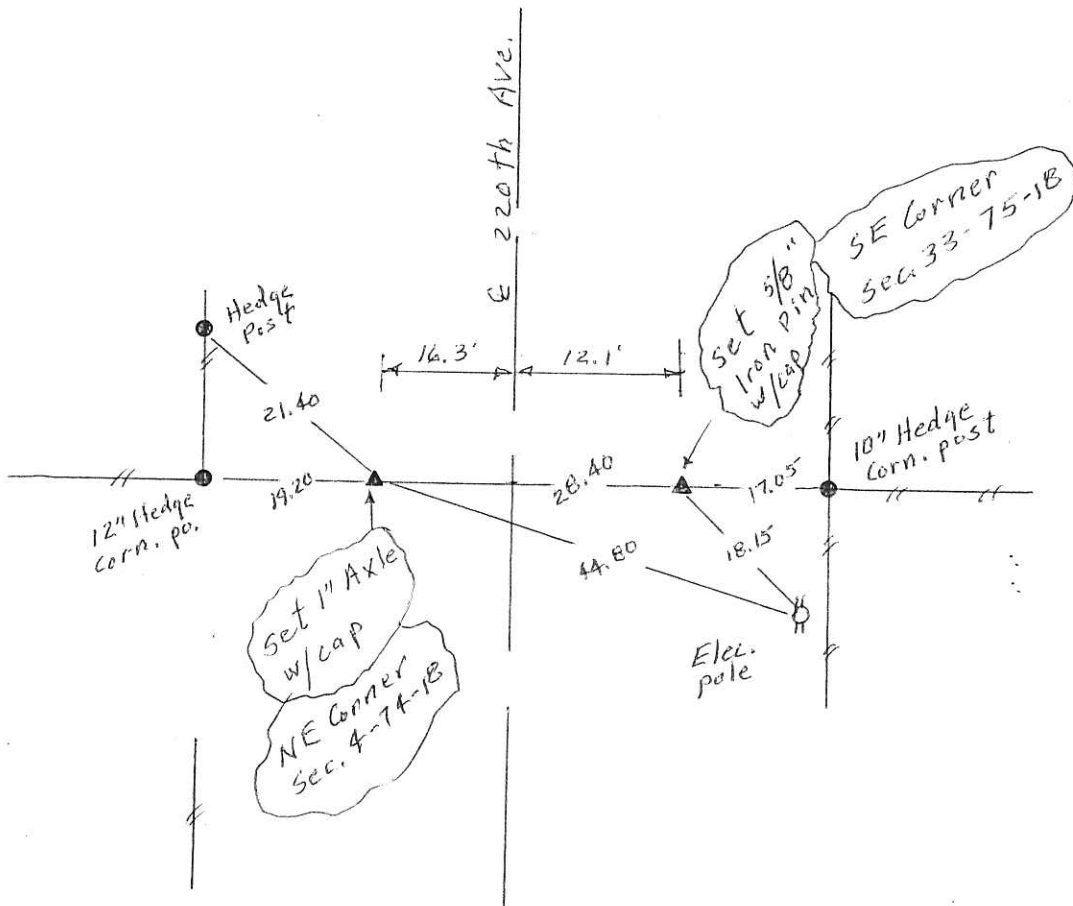
Show reason for preparing this certificate, the evidence and detailed procedures used in establishing the corner positions and monumentation found or placed

Monument Description and Remarks: Dug a hole 5'x2'x2' in area indicated by 1942 ties. Found nothing. Probably destroyed by road construction. Set corner from the old 1942 ties and set out new ties.



PLAN - VIEW

(Show a minimum of three reference ties to durable physical objects, relevant monuments and physical conditions that will enable recovery of the corner.)



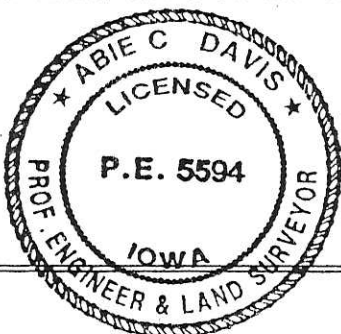
I hereby certify that the survey work was completed and this land surveying document was prepared by me or under my direct personal supervision and that I am a duly licensed land surveyor under the laws of the state of Iowa

Signature: Abie C. Davis
Abie C. Davis, P.E. & L.S.

Date: 8/9/16 Reg. No. 5594

My license renewal date is December 31, 2017

SEAL



List Corners to be Indexed			
Corners	Section	Twp	Range
SE	33	75N	18W

PD \$700 cash - Ret Abie Davis

Found sand stone broken in
 Pieces over 1-Hole & a Piece Tile
 6" Long both 2" round tile

Set C.m. over the hole Tile Lowered
 in Place, one Piece of stone on top
 C.m. Put the rest around mon at base

Piece of tile on North side mon.

N.E. Cor 4-74-18

Set - APR. - 21 - 48

Notes - Kennedy

Party - Shore

