

Found 1-2" round Tile Laying Flat
 12" Below Surface, at west side of 24" Elm
 Tree, 2 spike Nails driven in Tree
 3' + 3.5' directly above. IN Late years
 Fence has been set N. & E. of Cor. but
 Line From older Fences $\frac{1}{4}$ mi west &
 $\frac{1}{4}$ mi south Lead to this Point

Placed c.m. over 1-2" tile on END.
 Flint Rock over c.m.

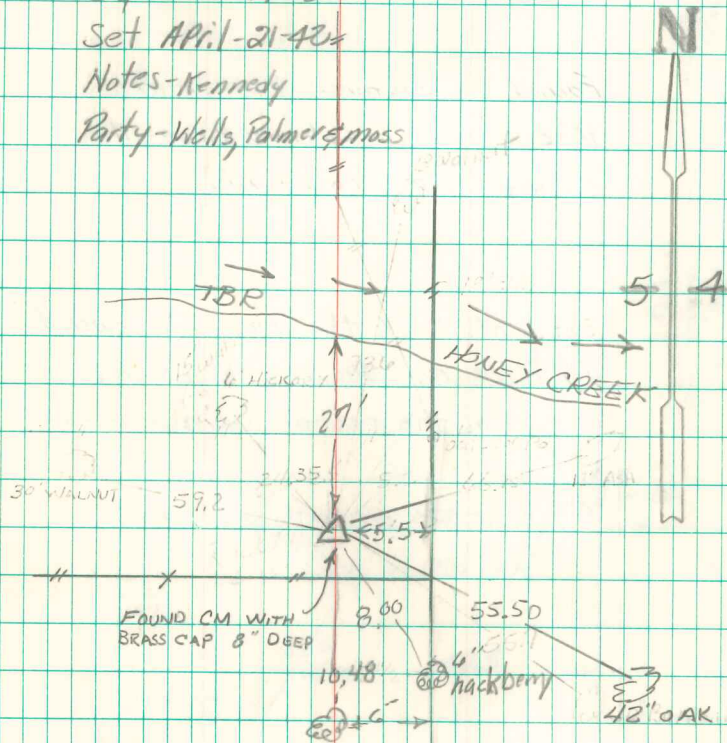
2647.0 East of stone at ctr sec. 5
 2667.0 North of c.m. South East Cor

E $\frac{1}{4}$ Cor 5-74-18

Set April-21-42

Notes-Kennedy

Party-Wells, Palmer & Mass



FOUND & RETIED
 BY GARDEN ENG.
 AUG. 3, 1977

Found Conc Mon. 3' deep
 set 5/8" iron pin w/cap
 # 5594 on N. side 3"
 above ground
 5/4/71 Abie Davis