

FENCE COR AT LOCATION OF
SW $\frac{1}{4}$ SW $\frac{1}{4}$ SEC. 5, IS MIDWAY
BETWEEN SW COR & CALV. W $\frac{1}{4}$
COR. SEC 5.

WILLIS S. BIDDLE

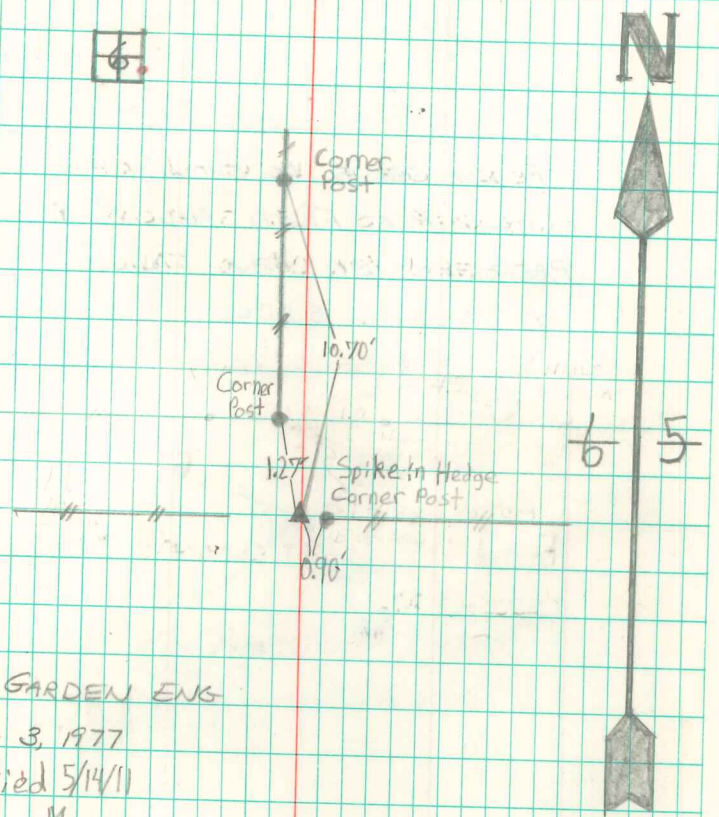
R.L.S. 6923

Found 4"x4" IaDOT concrete monument
exposed 10"

Brian Morrissey

R.L.S. 7995

NW COR. SW $\frac{1}{4}$ SW $\frac{1}{4}$ SEC 5-74-18



By GARDEN ENG

AUG 3, 1977

Retied 5/14/11

Brian Morrissey