

Found Sand stone 14"x6"x4" over
brick.

set C.M. over Brick,

set sand stone Top C.M.

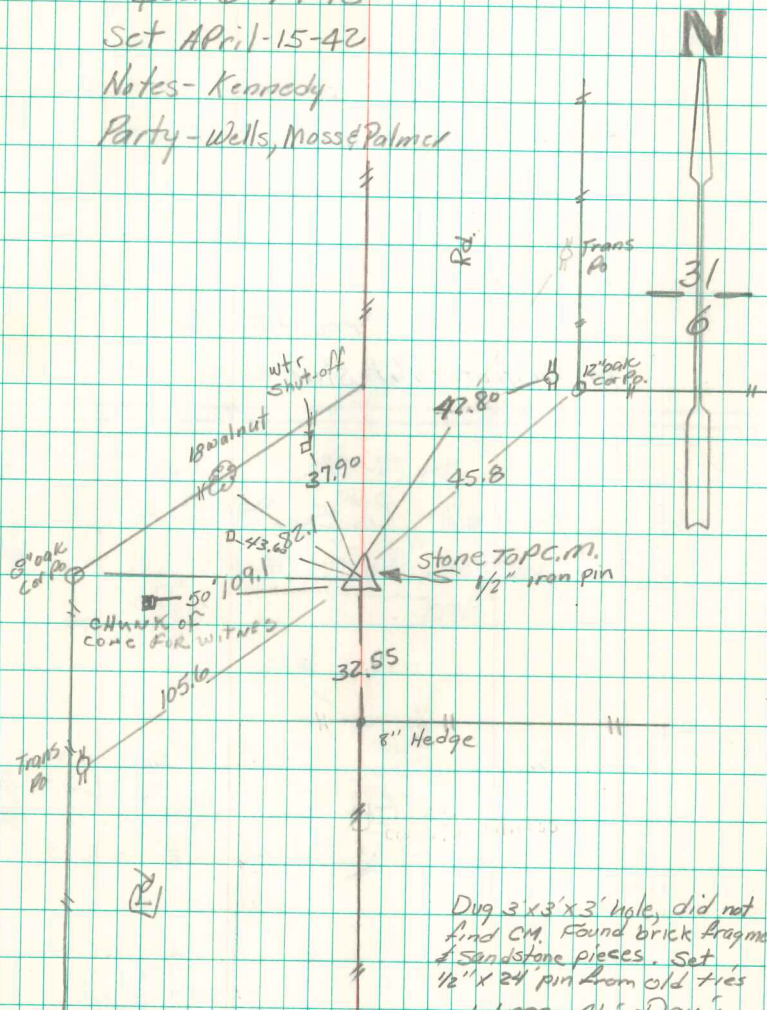
2485.5 East of sec Corner.

N $\frac{1}{4}$ Cor 6-74-18

Set April-15-42

Notes- Kennedy

Party- Wells, Mass & Palmer



Dug 3'x3'x3' hole, did not
find C.M. Found brick fragments
& sandstone pieces. Set
1/2" x 24" pin from old ties
5/3/1975 Abie Davis