

this corner stone & Iron Rod where
 Dragged out by Geo. Rose with Road
 Grader, who started he replaced the
 Iron Rod in as Near original Position
 as He could Guess. Found Iron Rod.
 Established Corner 2 East

Set C.M. over same Crookery

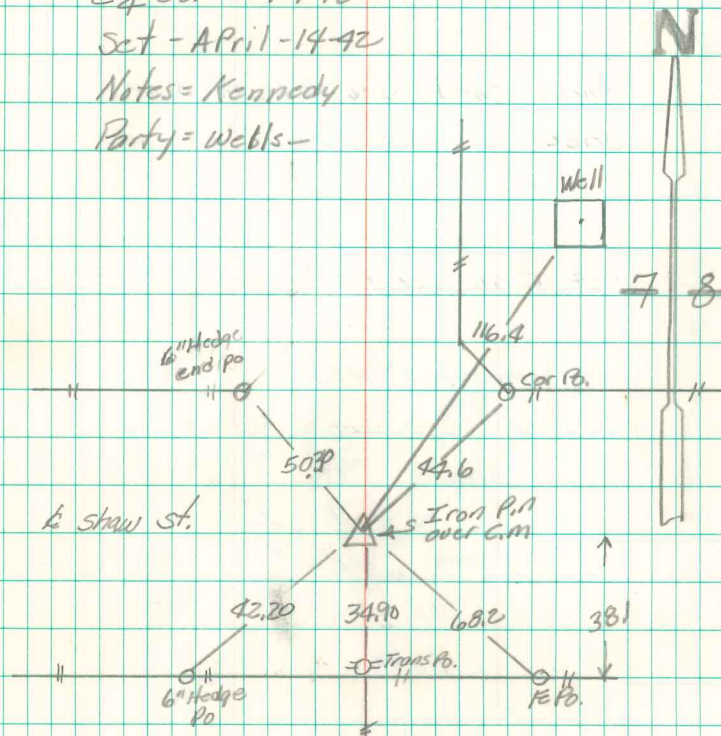
2659.0 South of C.M. at N.E. cor 7
 2652.0 North " C.M. at S.E. " 7

E 1/4 Cor 7-7418

Set - April - 14 - 92

Notes = Kennedy

Party = Wells -



Found & Replied

4/23/91

8/14/02