

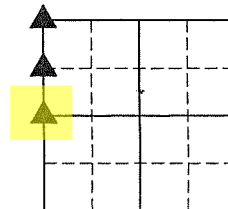
KAREN SCHWANEBECK, RECORDER
MARION COUNTY IOWA



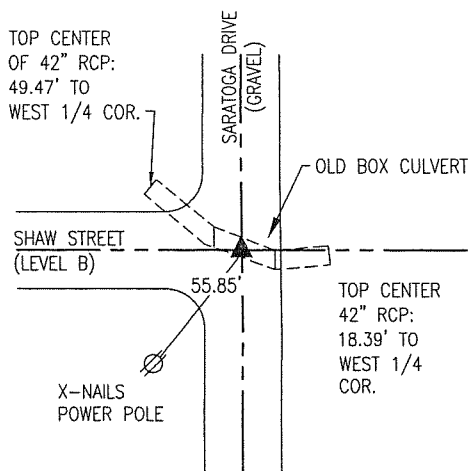
GARDEN & ASSOC. P.O. Box 451, Oskaloosa, Iowa 52577-0451 Phone: (641)672-2526

UNITED STATES PUBLIC LAND SURVEY CORNER CERTIFICATE
OF

Land Survey Monuments situated in Section 9, Township 74 NORTH, Range 18 WEST, of the Fifth Principal Meridian, MARION County, Iowa. Previously recorded in NO CERTIFICATE OF RECORD in County Recorder's Office. Monument Description and Remarks: SEE BELOW



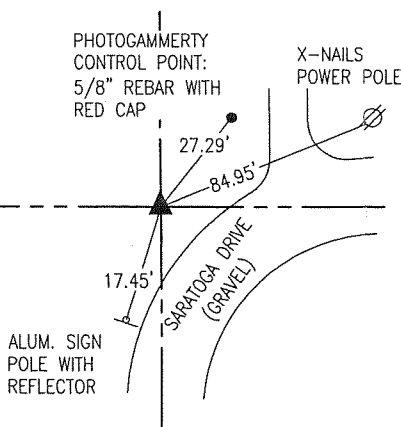
WEST 1/4 COR.



April 1942
WPA surveyors set a concrete monument at a proportional distance east of the center of Section 8-74-18 in line with centerline of road to the west. Said corner was 5.2' west of the east end of a box culvert.

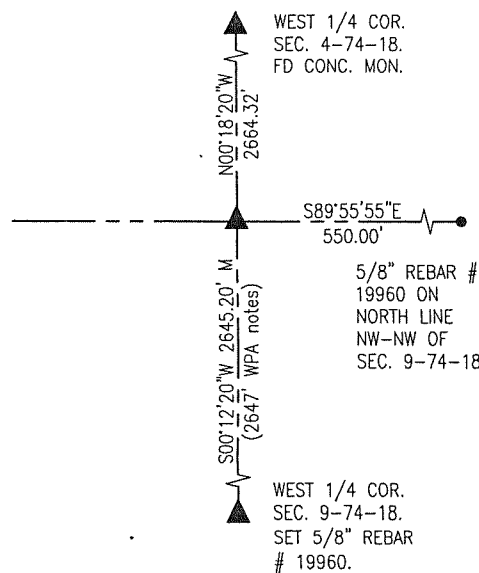
May 2013
The box culvert referred to in the WPA ties still exists with 42" RCP extensions added to both ends. Measured distances inside the pipes from the aprons of the new extensions to the ends of the box culvert and transferred the location to the road bed. Crossed WPA ties from these locations and dug a 4' x 3' hole to the top of the box culvert but was unable to find the concrete monument. Set a 15" x 5/8" rebar # 19960 10" deep with a 60d nail directly above per WPA ties.

SW COR. NW-NW



May 2013
It is unclear whether Saratoga Drive was intended to run the 1/4-1/4 line as it runs East from this point. Therefore, the corner was set at the midpoint between the West 1/4 corner and the Northwest corner of Section 9-74-18.

NW COR.



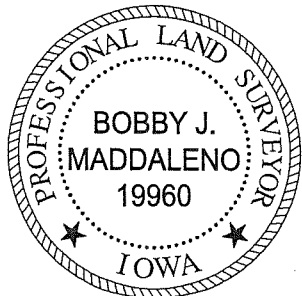
April 1942
WPA surveyors set a concrete monument at intersection of old fences.

May 2013
All local evidence has been obliterated by strip mining. Reset corner in line with fence to the North a prorated distance North of the West 1/4 Corner of Sec. 9-74-18 according to distances from WPA notes. The corner falls on the side of a mound of strip mining refuse and there are no durable ties in the vicinity.

I hereby certify that this land surveying document was prepared and the related survey work was performed by me or under my direct personal supervision and that I am a duly licensed Professional Land Surveyor under the laws of the State of Iowa.

Bobby J. Maddaleno P.L.S. 6-6-13
Bobby J. Maddaleno, P.L.S. Date
License number: 19960
My license renewal date is December 31, 2013

SEAL



List Corners to be Indexed			
Corners	Section	Township	Range
West 1/4 Cor.	9	74	18
SW Cor. NW-NW	9	74	18
Northwest Cor.	9	74	18

PL 13700 CK - Ret Garden & Assoc. enw

This Corner was Lost by being in a
 Ditch & Conc. Culvert built on corner.
 Established on Direct Line North &
 South between sec. corners, and
 Proportioning the Distances
 through center of sec 8 as Done
 by F.M. Flush County surveyor
 1854 Position North & South
 Controlled by Line at midpoint
 between old Hedge Rd Fences
 running west & Line of Hedge Fence
 East to center sec 8.

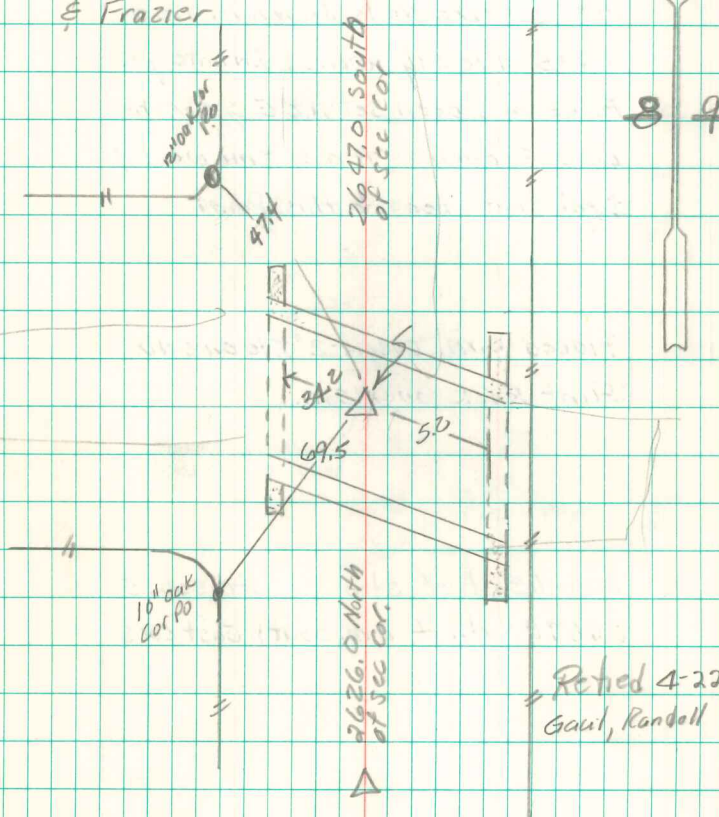
2632.0 East of center sec 8
 1316.0 " " $\frac{1}{4}$ Corner

E $\frac{1}{4}$ Cor 8-74-18

Set - April - 14-98

Notes: Kennedy Δ

Party = Barker, wells, Mandell
 & Frazier



Rehed 4-22-66
 Gaul, Randall