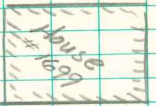


E 1/2 Cor 10-74-19

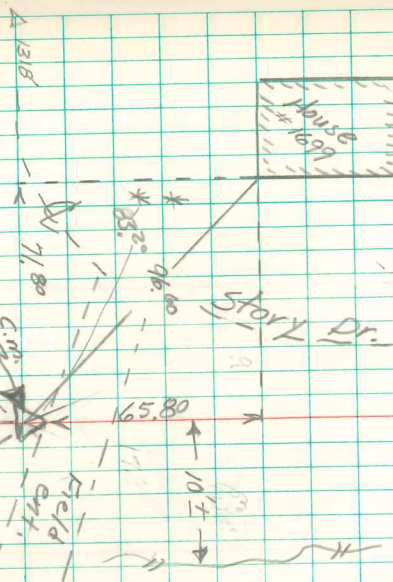
Set - 11-28-39

Notes: Wignall

Party - Korns, Frabicy, Russell & Kennedy



Stork Dr.



Established cor. From E 1/2 cor 9
& center of section 10

Set C.M.

End on 10" deep w/ 10" x 8" x 4"

granite rock on top. Set 5/8"

iron pin on N. side on 6"

deep w/ top 5594. Road

Stone backstop flush w/ ground

Alvin Davis 4/4/61