

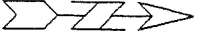
KAREN SCHWANBECK, RECORDER
 MARION COUNTY IOWA

Prepared by: Abie C. Davis, P.E. & L.S., 1428 Oregon St., Knoxville, Iowa 50138 Phone: (515) 842-5863

UNITED STATES PUBLIC LAND SURVEY CORNER CERTIFICATE OF

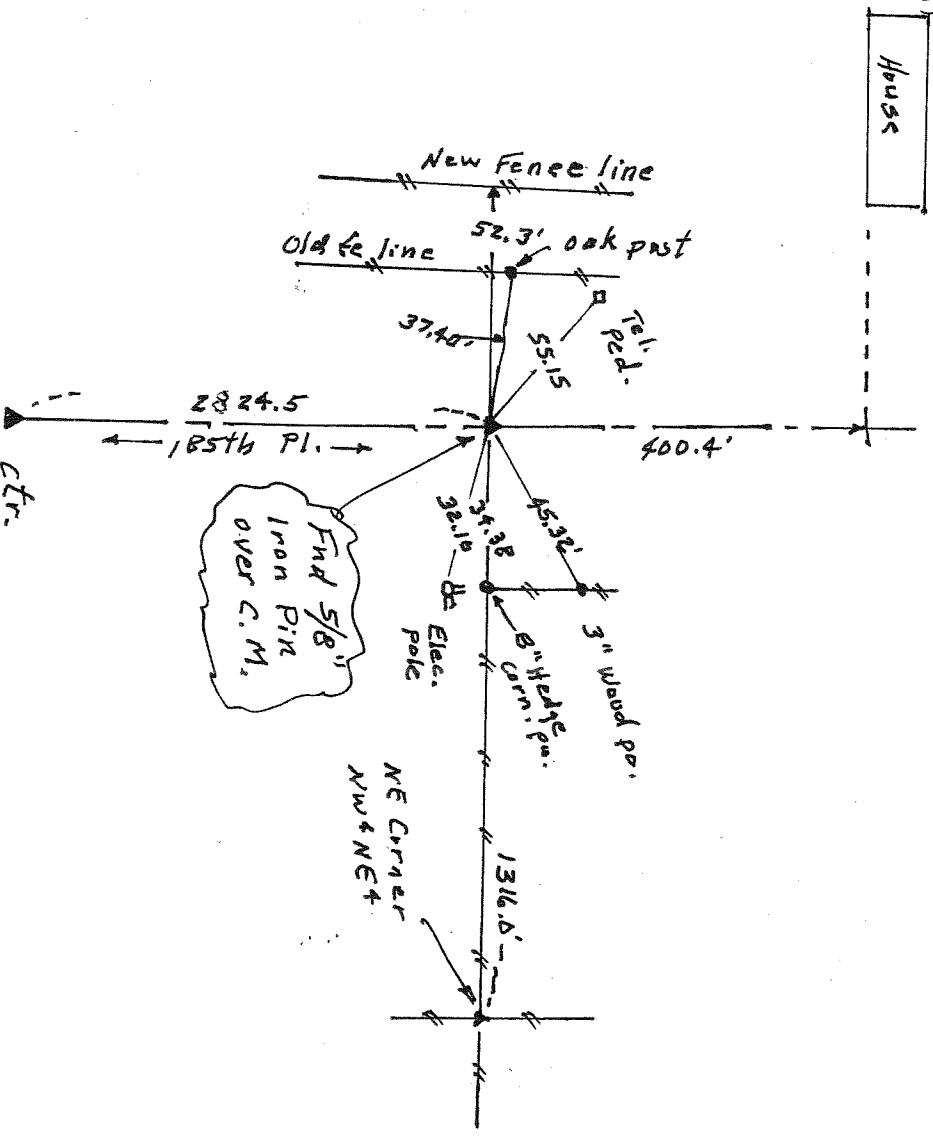
SLS19-94

Land survey Monuments situated in Section 1, Township 74N, Range 19W, of the Fifth Principal Meridian, Marion County, Iowa.
 Previously recorded in Book 1, Page 63 in County Recorders Office.
Show reason for preparing this certificate, the evidence and detailed procedures used in establishing the corner positions and monumentation found or placed
 Monument Description and Remarks: Found 5/8" Iron Pin over C.M. set out new ties



PLAN - VIEW

(Show a minimum of three reference ties to durable physical objects, relevant monuments and physical conditions that will enable recovery of the corner.)

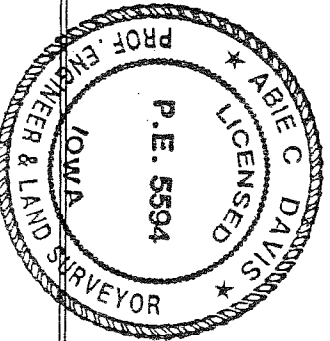


I hereby certify that the survey work was completed and this land surveying document was prepared by me or under my direct personal supervision and that I am a duly licensed land surveyor under the laws of the state of Iowa

Signature: Abie C. Davis
 Abie C. Davis, P.E. & L.S.
 Date: 12/4/13 Reg. No. 5594

My license renewal date is December 31, 2013

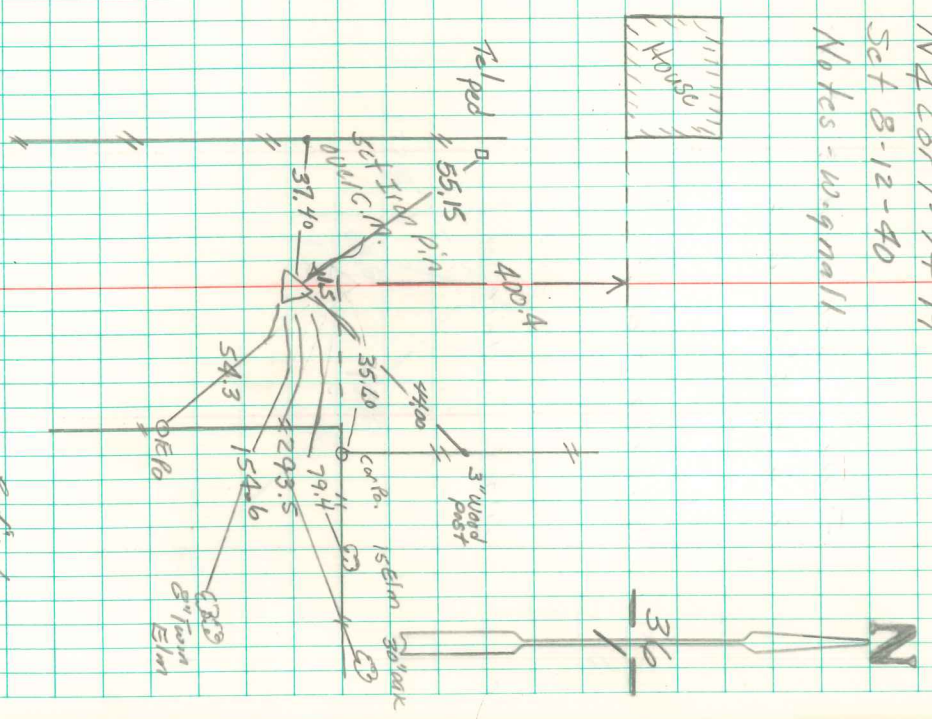
SEAL



List Corners to be Indexed
 Corners Section Twp Range
N 4 1 74N 19W

Pd \$700 cash - Ref Abie Davis

N $\frac{1}{2}$ Cor 1-74-19
Set 8-12-40
Notes - W. g. Hall



Ketfield
5/21/92
H. E. Davis

Found Sand stone 21"x14"x9"
over 2-2" D tile on END.

Lowered 1-2" D tile in orig
Position

Set C.M. over it
" Stone over C.M.