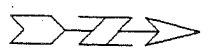
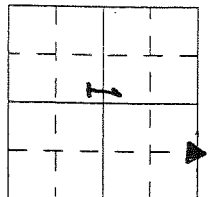


KAREN SCHWANBECK, RECORDER
 MARION COUNTY IOWA

Prepared by: Abie C. Davis, P.E. & L.S., 1428 Oregon St., Knoxville, Iowa 50138 Phone: (515) 842-5863

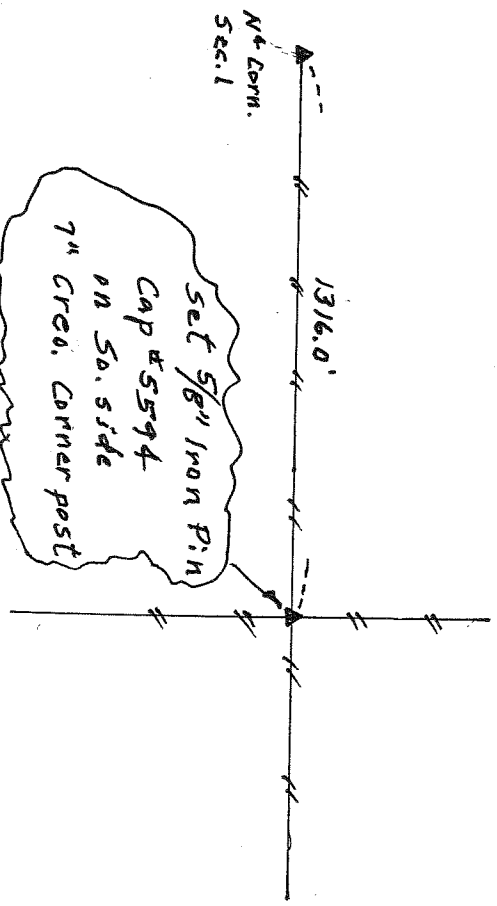
UNITED STATES PUBLIC LAND SURVEY CORNER CERTIFICATE SLS19-94
OF

Land survey Monuments situated in Section 1, Township 74N, Range 19W, of the Fifth Principal Meridian, Marion County, Iowa.
 Previously recorded in N/A in County Recorders Office.
(Book, page, document number, etc.)
 Show reason for preparing this certificate, the evidence and detailed procedures used in establishing the corner positions
 Monument Description and Remarks: Set Corner of the intersection of established property line fences E-W and N-S



PLAN - VIEW

(Show a minimum of three reference ties to durable physical objects, relevant monuments and physical conditions that will enable recovery of the corner.)

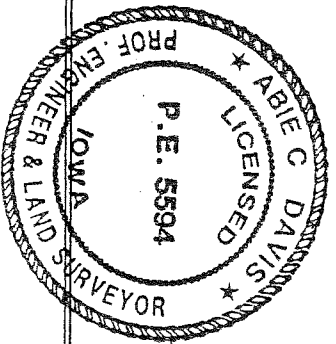


I hereby certify that the survey work was completed and this land surveying document was prepared by me or under my direct personal supervision and that I am a duly licensed land surveyor under the laws of the state of Iowa

Signature: Abie C. Davis
 Abie C. Davis, P.E. & L.S.
 Date: 12/4/13 Reg. No. 5594

My license renewal date is December 31, 2013

SEAL



List Corners to be Indexed			
Corners	Section	Twp	Range
NE Corner	1	74N	19W
NW + NE +			

PL\$700 cash - Ret Abie Davis