



Document 18-3218

Book 2018 Page 3218 Type CORNR Pages 1
Date 8/01/2018 Time 10:45 AM
Rec Amt \$7.00

KAREN SCHWANEBECK, RECORDER
MARION COUNTY IOWA

Prepared by Abie C. Davis, P.E. & L.S., 1428 Oregon St., Knoxville, IA 50138 (641) 842-5863

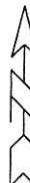
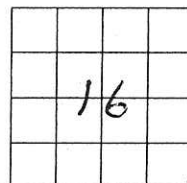
UNITED STATES PUBLIC LAND SURVEY CORNER CERTIFICATE OF

Land survey Monuments situated in Section 16, Township 74N, Range 19W, of the Fifth Principal Meridian, Marion County, Iowa.

Previously recorded in Bk 1, Pg 55 in County Recorders Office.

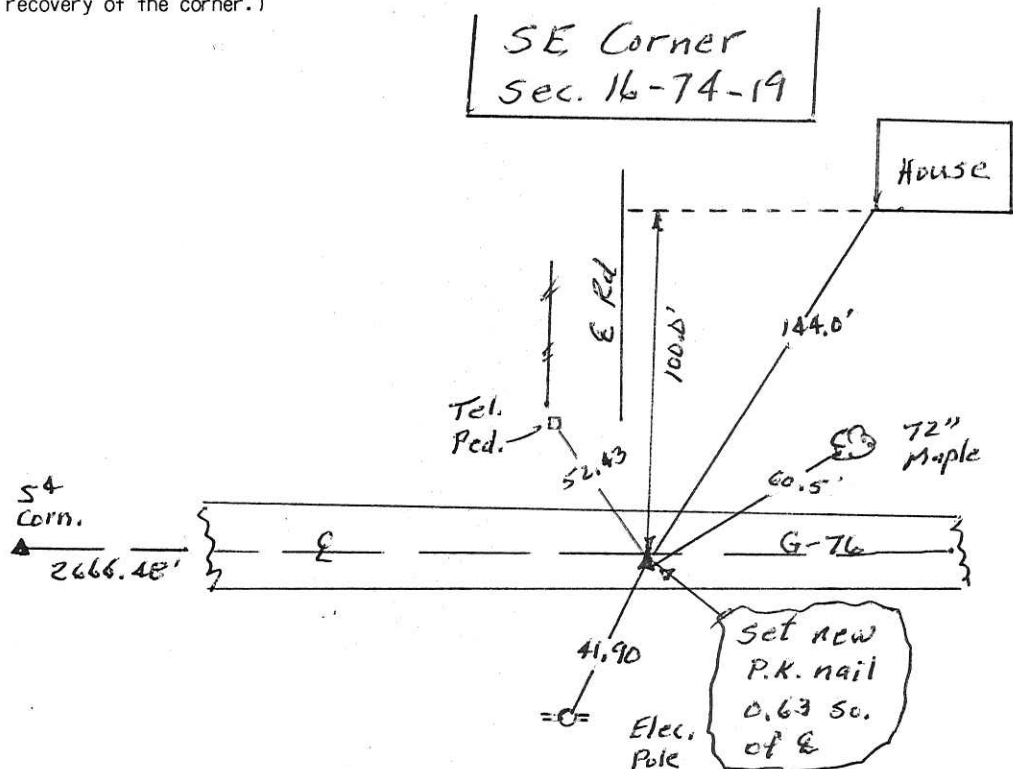
(book, page, document number, etc.)
Show reason for preparing this certificate, the evidence and detailed procedures used in establishing the corner positions and monumentation found or placed

Monument Description and Remarks: Found PK nail with head broken off set in April 1992. Set new PK nail on spot and set out updated ties



PLAN - VIEW

(Show a minimum of three reference ties to durable physical objects, relevant monuments and physical conditions that will enable recovery of the corner.)



I hereby certify that the survey work was completed and this land surveying document was prepared by me or under my direct personal supervision and that I am a duly licensed land surveyor under the laws of the state of Iowa

Signature: Abie C Davis

Abie C. Davis, P.E. & L.S.

Date: 7/31/18 Reg. No. 5594

My license renewal date is December 31, 2019

SEAL



List Corners to be Indexed
Corners Section Twp Range

SE 16 74N 19W

Pd \$700 Cash - Ret Abie Davis

Found Sandstone 14" x 12" x 3" &
2-2" \perp Tile

Set C.m. over 1-2" \perp Tile & Placed
Sandstone on South side

