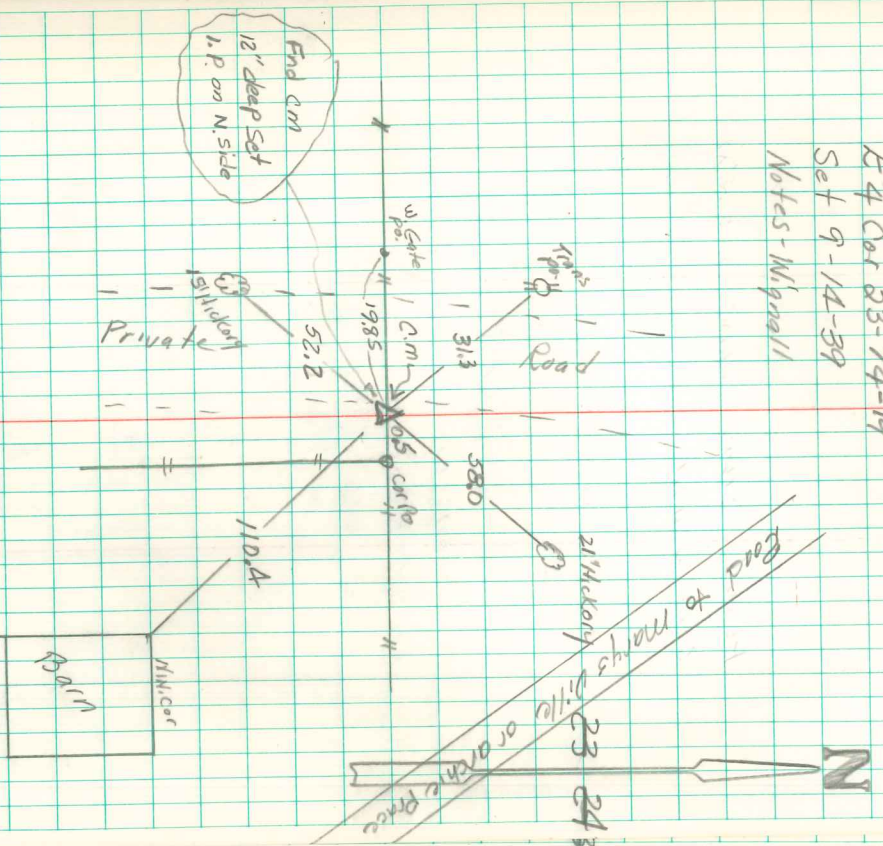


E 1/4 Cor 23-74-19
Set 9-14-39
Notes - Wignall



Found 5' Etid
July 6-1971 - by Moll, Progon & Conner
October 31, 1994 by Rob & Davis

Found 2-Stones 20"x14"x5" & 11"x7"x3"
& 2-2 1/2" D.I.T.
Set c.m. over 2-D.I.T.
Stone on North side c.m.