

# UNITED STATES PUBLIC LAND SURVEY CORNER CERTIFICATE OF

Land Survey Monuments situated in Section 25, Township 74N, Range 19W, of the Fifth Principal Meridian, Marion County, Iowa.  
Previously recorded in Book 1, Page 302 in the County Recorder's Office.  
(book, page, document number, etc.)

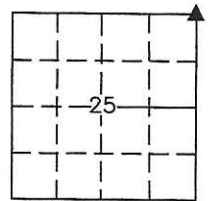
(Show reason for preparing this certificate, the evidence and detailed procedures used in establishing the corner positions and monumentation found or placed.)

Monument Description and Remarks: Found 4" x 4" WPA concrete monument with stone on north side 6" deep and iron pin on south side. Previous ties altered or obliterated.

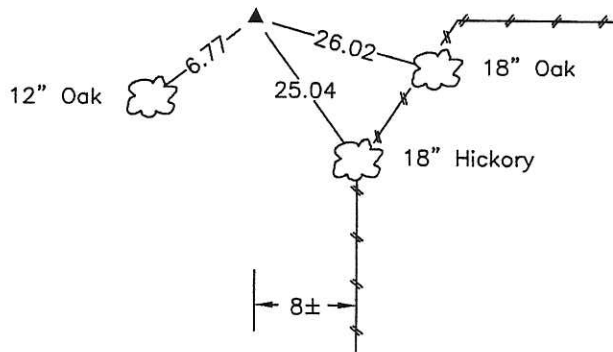
This Corner was used for a Plat of Survey in the SW 1/4 of the SE 1/4 of Sec. 25, recorded in Bk. 2015, P. 2713.

## PLAN VIEW

(Show a minimum of three reference ties to durable physical objects, relevant monuments and physical conditions that will enable recovery of the corner.)



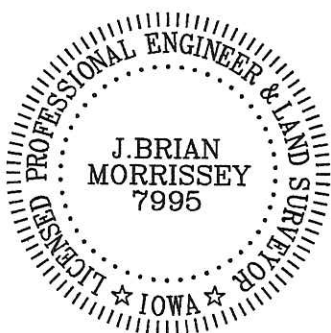
Found 4" x 4" WPA concrete monument with stone on north side 6" deep and iron pin on south side.



NE Corner, Section 25

Date of Survey: 6/6/15

NOTE: ALL TIES TO BRASS DISK OR YELLOW/ORANGE SURVEY MARKER UNLESS NOTED.



I hereby certify that this land surveying document was prepared and the related survey work was performed by me or under my direct personal supervision and that I am a duly Licensed Land Surveyor under the laws of the state of Iowa.

Signature: J. Brian Morrissey Date: 9/8/15  
J. Brian Morrissey

License number 7995.

My license renewal date is December 31, 2015

806-15-4/6

Found stone 12"x10"x2" & 2-2" Tile

Set c.m. over 2-2" Tile Horiz

set stone on North side c.m.

FOUND & RETIED 7/7/83 PREGAN & ROBINSON

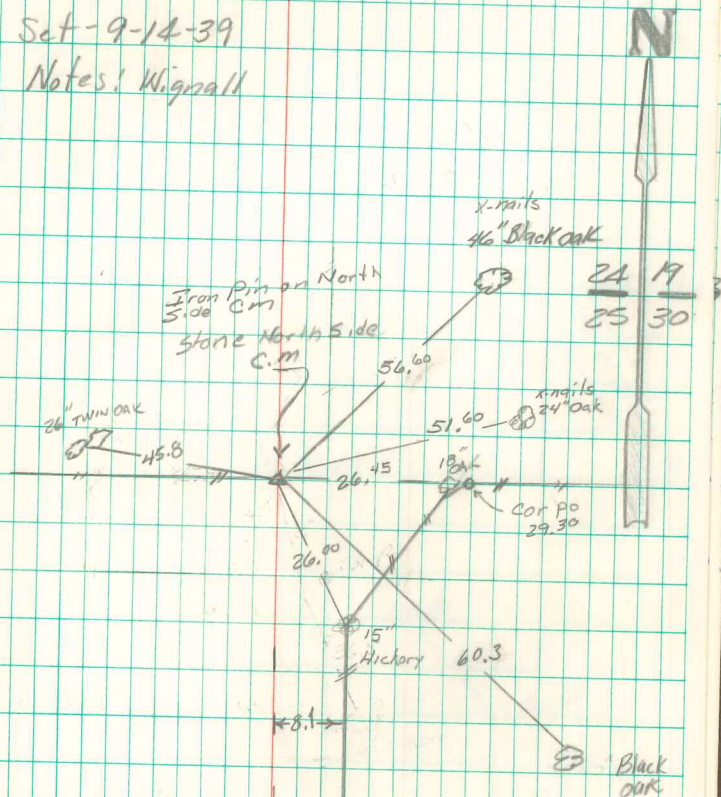
Set NAILS Around CM

Set iron pin on N. side

N.E. Cor 25-74-19

Set - 9-14-39

Notes: Wignall



Found & Retied

1/27/93

Pregan, Quick  
Vande Veer