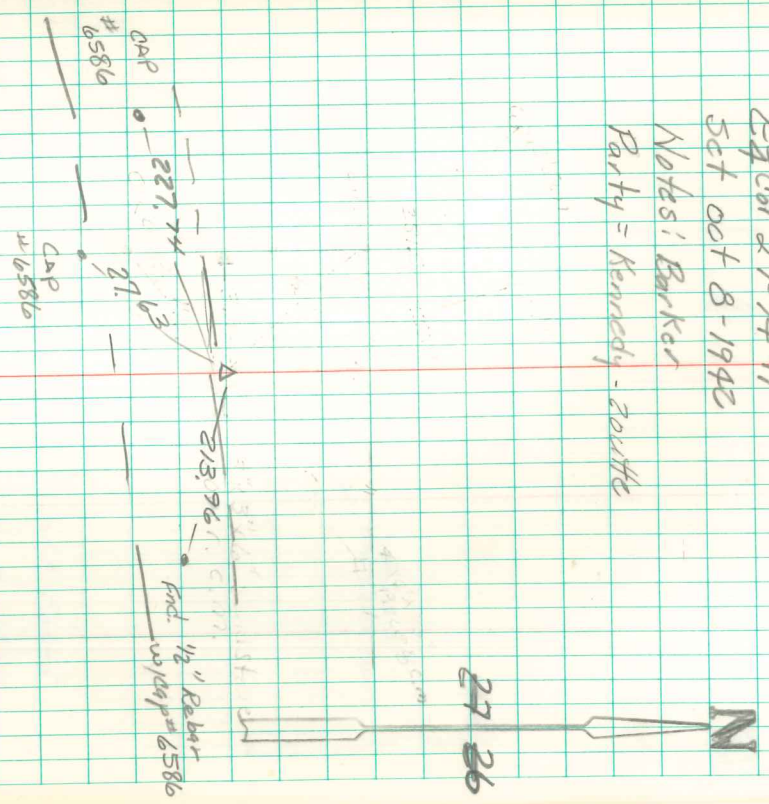


Dug hole 8'x8'x2' Deep on all sides of Point indicated by line & measurements.
 Found small pieces of yellow sandstone evidently a fragment of corner stone
 Found stone 4 mi. East of stone 3/8 mi south
 Set on former survey. Reestablished corner on line over stone 3/8 mi south of c.m.
 1/2 mi. south, which lines intersect at a Point on Proportional measurements
 From same cor.

Set C.M. 15' Below surface Put Broken Crookery under c.m.
 3" x 3" x 6" sandstone @ 1/2 c.m.
 26430' West of E 40' Road
 1321.5' " " 1/4 Stone & E South
 26630.0' North of c.m. at N.E. cor 34
 1997.0' " " Stone at 1/4 cor

E 1/4 Cor 27-74-19
 Set Oct 8-1942
 Notes: Barker
 Party = Kennedy - Zouthe



Dug 10'x12'x12' hole in search of a bent rebar of record using existing ties, nothing was found.
 Set 1/2" re-bar w/ tag #6586 using distances from engineers ties & existing fence line evidence Robert Stumbo