

NAOMI ELLIS, RECORDER  
MARION COUNTY IOWA

Prepared By: J. Brian Morrissey, Morrissey Surveying & Consulting, LLC, 1405 Hwy. 620, Utey, Ia. 50214, 515-480-2531

# UNITED STATES PUBLIC LAND SURVEY CORNER CERTIFICATE OF

Land Survey Monuments situated in Section 29, Township 74N, Range 19W, of the Fifth Principal Meridian, Marion County, Iowa.  
Previously recorded in N.A. in the County Recorder's Office.  
(book, page, document number, etc.)

(Show reason for preparing this certificate, the evidence and detailed procedures used in establishing the corner positions and monumentation found or placed.)

Monument Description and Remarks: Monument not set, in creek. Position determined at intersection of long standing fence bearing from the SW Cor., NW 1/4 of the NW 1/4 to a newer fence corner east 1752 feet and a line from the found N 1/4 Cor. and Center of Section.

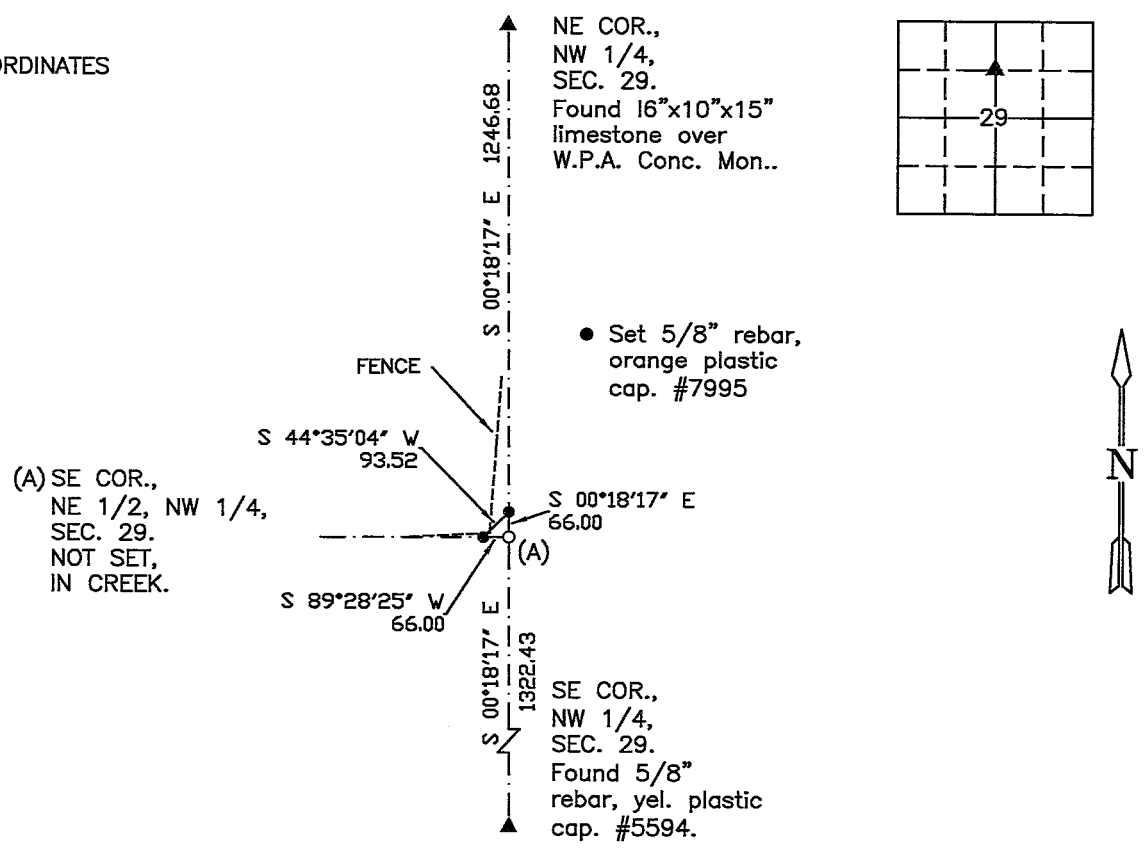
This Corner was used for a Retracement Plat of Survey in the in the NW 1/4, Section 29.

## PLAN VIEW

(Show a minimum of three reference ties to durable physical objects, relevant monuments and physical conditions that will enable recovery of the corner.)

IOWA STATE PLANE COORDINATES  
NAD83, SOUTH ZONE

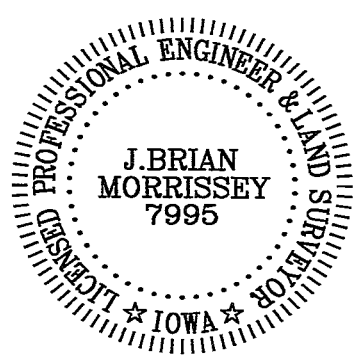
NORTHING: 432476.36  
EASTING: 1758509.19



SE Cor., NE 1/4 of the NW 1/4, Section 29

Date of Survey: 6/17/22

NOTE: ALL TIES TO YELLOW/ORANGE PLASTIC SURVEY MARKER UNLESS NOTED.



I hereby certify that this land surveying document was prepared and the related survey work was performed by me or under my direct personal supervision and that I am a duly Licensed Land Surveyor under the laws of the state of Iowa.

Signature: J. Brian Morrissey Date: 6/27/22  
J. Brian Morrissey

License number 7995.  
My license renewal date is December 31, 2023

1161-22-2/2

Red #799 OK - Ret Brian Morrissey