



GARDEN & ASSOC.

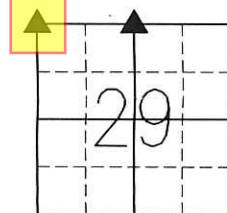
P.O. Box 451, Oskaloosa, Iowa 52577-0451 Phone: (641)672-2526

KAREN SCHWANEBECK, RECORDER  
MARION COUNTY IOWA

UNITED STATES PUBLIC LAND SURVEY CORNER CERTIFICATE  
OF

Land Survey Monuments situated in Section 29, Township 74, Range 19, of the Fifth Principal Meridian, MARION County, Iowa. Previously recorded in NO TIES OF RECORD in County Recorder's Office.

Monument Description and Remarks: NORTHWEST CORNER: FOUND CONC. MON. WITH BRASS CAP USING TIES OBTAINED FROM THE MARION COUNTY ENG. OFFICE.  
NORTH 1/4 CORNER: FOUND STONE OVER CONCRETE MONUMENT USING TIES OBTAINED FROM MARION COUNTY ENG. OFFICE. CORNERS USED TO PERFORM A PLAT OF SURVEY IN THE SOUTHEAST 1/4 OF THE NORTHWEST 1/4 SECTION 29-74-19.

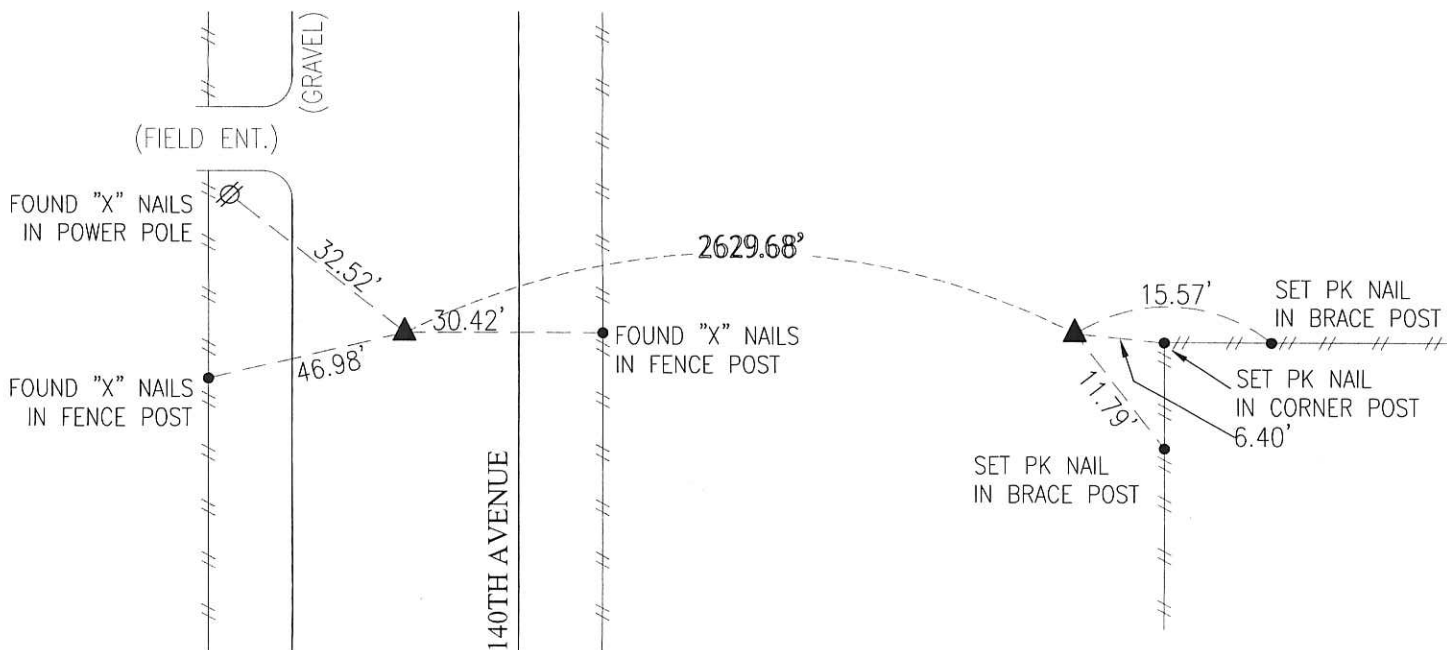


NORTHWEST CORNER  
SECTION 29-T74N-R19W

FOUND CONCRETE MONUMENT WITH STAMPED BRASS CAP 2" BELOW GRADE USING TIES OBTAINED FROM MARION COUNTY ENGINEERING DEPARTMENT

NORTH 1/4 CORNER  
SECTION 29-T74N-R19W

FOUND 6"x10"x15" STONE OVER CONCRETE MONUMENT 14" BELOW GRADE USING TIES OBTAINED FROM MARION COUNTY ENGINEERING DEPARTMENT



I hereby certify that this land surveying document was prepared and the related survey work was performed by me or under my direct personal supervision and that I am a duly licensed Professional Land Surveyor under the laws of the State of Iowa.

5-5-2016

Scott A. Catron, P.L.S.

Date

License number: 22232

My license renewal date is December 31, 2017

SEAL



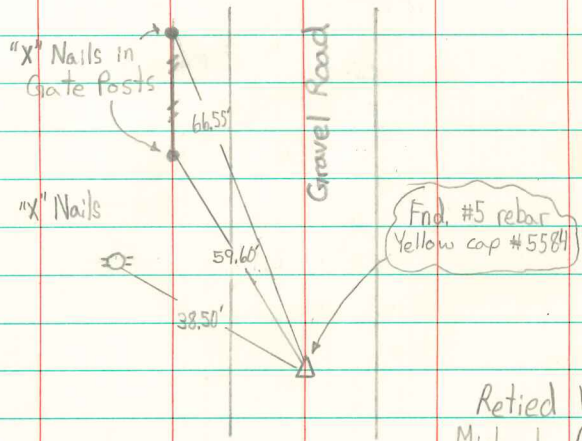
Corners	Section	Township	Range
NW CORNER	29	74	19
N1/4 CORNER	29	74	19

Add Book - Plat Garden & Assoc. env

Found Granit Rock 20"x12"x6"  
over 2-3" drain tile also some  
Pieces of Glass & China ware  
Tile on end.

Lowered 1-3" tile in place & set  
C.M. over it Pieces of China ware  
at base of Tile. Granit Rock on  
South side & top of mon.

SW cor. Sec. 20-74-19



19 20  
30 29

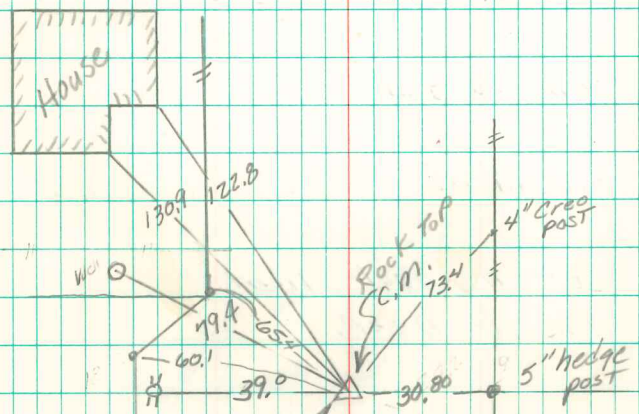
Retied 11/21/00  
Michael Crapnell

N.E. Cor 30-74-19

Set - 5-29-40

Notes = Wignall

Party - Kennedy, Ogden & Shorer



19 20  
30 29

End Conc. Mon  
6" deep. Set 5/8"  
iron pin on N. side  
Abie Davis  
5/29/98

New Tie