

UNITED STATES PUBLIC LAND SURVEY CORNER CERTIFICATE OF

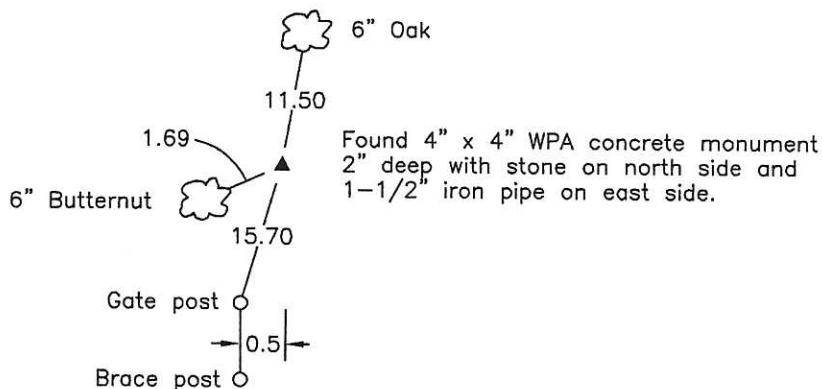
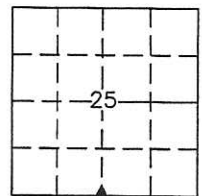
Land Survey Monuments situated in Section 25, Township 74N, Range 19W, of the Fifth Principal Meridian, Marion County, Iowa.
Previously recorded in Book 2, Page 145 in the County Recorder's Office.
(book, page, document number, etc.)

(Show reason for preparing this certificate, the evidence and detailed procedures used in establishing the corner positions and monumentation found or placed.)

Monument Description and Remarks: Found 4" x 4" WPA concrete monument 2" deep with 4" x 8" x 8" stone on north side and 1-1/2" iron pipe on east side. Previous ties altered or obliterated.
This Corner was used for a Plat of Survey in the SW 1/4 of the SE 1/4 of Sec. 25, recorded in Bk. 2015, P. 2713.

PLAN VIEW

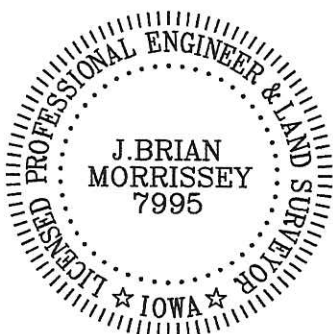
(Show a minimum of three reference ties to durable physical objects, relevant monuments and physical conditions that will enable recovery of the corner.)



SW Corner, SW 1/4 of the SE 1/4, Section 25

Date of Survey: 6/6/15

NOTE: ALL TIES TO BRASS DISK OR YELLOW/ORANGE SURVEY MARKER UNLESS NOTED.



I hereby certify that this land surveying document was prepared and the related survey work was performed by me or under my direct personal supervision and that I am a duly Licensed Land Surveyor under the laws of the state of Iowa.

Signature: J. Brian Morrissey Date: 9/8/15
J. Brian Morrissey

License number 7995.

My license renewal date is December 31, 2015

806-15-3/6

Dug hole 10'x40' at Point indicated
 by Line & measurements, Found No.
 evidence except rotted end of
 old oak stake. Established corner on
 proportional distances from old fence
 lines N & S, on Line of Center of 40'
 Highway South to center sec.

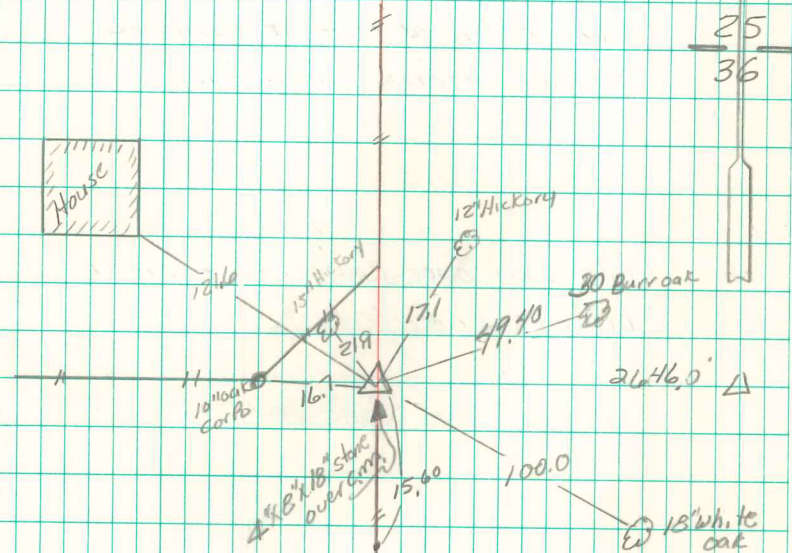
Set c.m. over 1-2" tile Placed remains
 of old stake at side of c.m. 4"x8"x8" Granite
 Rock over c.m.

N $\frac{1}{4}$ Cor Sec 36-74-19

Set - Aug - 28 - 1942

Notes = Kennedy

Party - Earl Barker, Nandell, Frazier



Found CM 2" deep
 4"x8"x8" stone on N. side
 set 1 1/2" iron pipe 0.25'E
 of cen. c.m.

Abie Davis 5/24/00