

KAREN SCHWANEBECK, RECORDER
MARION COUNTY IOWA

Prepared by Abie C. Davis, P.E. & L.S., 1428 Oregon St., Knoxville, IA 50138 (641) 842-5863

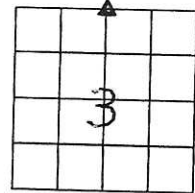
UNITED STATES PUBLIC LAND SURVEY CORNER CERTIFICATE

Land survey Monuments situated in Section 3, Township 74N, Range 19W, of the Fifth Principal Meridian, Marion County, Iowa.

Previously recorded in N/A in County Recorders Office.
Show reason for preparing this certificate, the evidence and detailed procedures used in establishing the corner positions and monumentation found or placed.

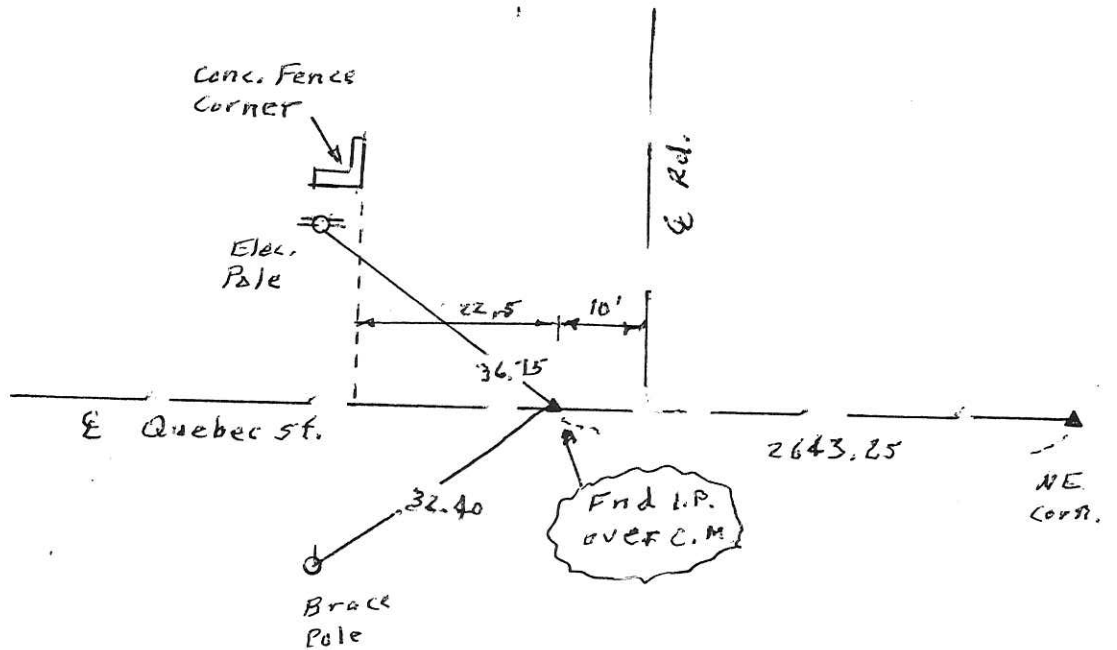
Monument Description and Remarks: End Iron Pin over

G.M.



PLAN - VIEW

(Show a minimum of three reference ties to durable physical objects, relevant monuments and physical conditions that will enable recovery of the corner.)



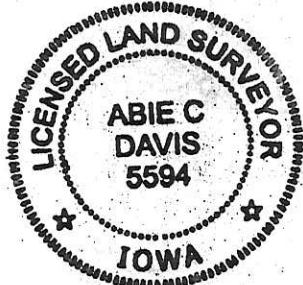
I hereby certify that the survey work was completed and this land surveying document was prepared by me or under my direct personal supervision and that I am a duly licensed land surveyor under the laws of the state of Iowa

Signature: Abie C. Davis
Abie C. Davis, P.E. & L.S.

Date: 4/16/2020 Reg. No. 5594

My license renewal date is December 31, 2021

SEAL



List Corners to be Indexed			
Corners	Section	Twp	Range
N ⁴	3	74N	19W

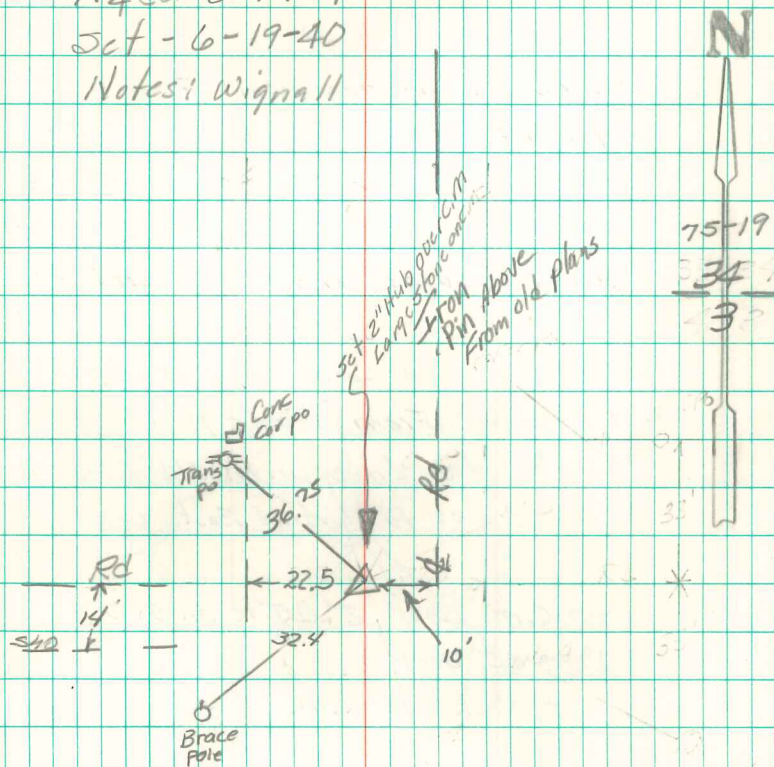
pd. 7-cant, Not Abie Davis

Found sandstone 21" x 11" x 3"
No tile

set c.m. over 2" Δ tile on END
stone over c.m.

C.M. 27" Deep

N $\frac{1}{4}$ Cor 3-74-19
Set - 6-19-40
Notes: Wignall



Ret'd 6/13/97
Pregon, Cor, McKimbs