

KAREN SCHWANEBECK, RECORDER
MARION COUNTY IOWA

Prepared by Abie C. Davis, P.E. & L.S., 1428 Oregon St., Knoxville, IA 50138 (641) 842-5863

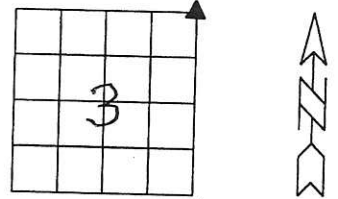
UNITED STATES PUBLIC LAND SURVEY CORNER CERTIFICATE

OF

Land survey Monuments situated in Section 3, Township 74N, Range 19W, of the Fifth Principal Meridian, Marion County, Iowa.

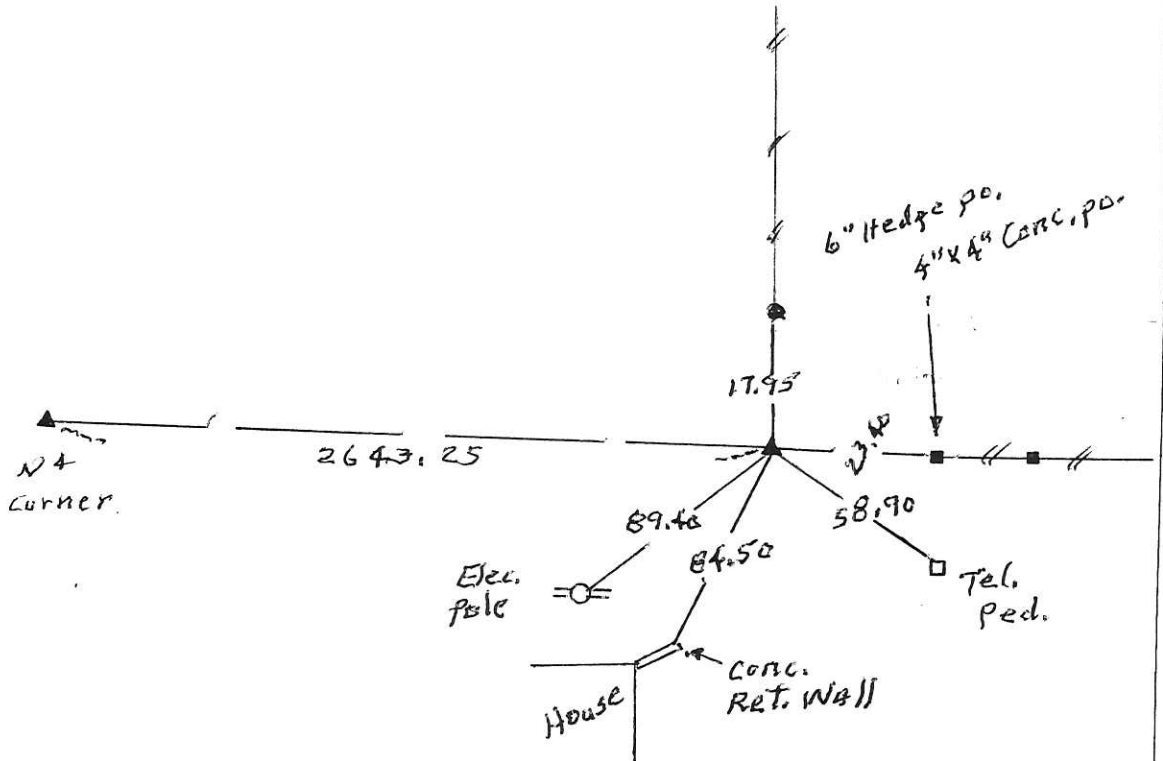
Previously recorded in N/A in County Recorders Office.
(book, page, document number, etc.)
Show reason for preparing this certificate, the evidence and detailed procedures used in establishing the corner positions and monumentation found or placed

Monument Description and Remarks: Dug Hole 15" deep at spot indicated from tie book at Co. Engineers office. Find nothing. Set 1 1/2" x 30" pipe at intersection of fe. North & fe. East as noted in old tie references. Other ties gone.



PLAN - VIEW

(Show a minimum of three reference ties to durable physical objects, relevant monuments and physical conditions that will enable recovery of the corner.)



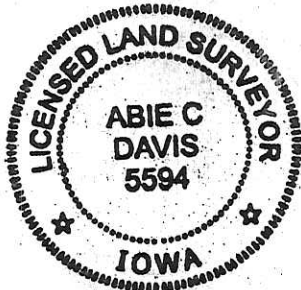
I hereby certify that the survey work was completed and this land surveying document was prepared by me or under my direct personal supervision and that I am a duly licensed land surveyor under the laws of the state of Iowa

Signature: Abie C Davis
Abie C. Davis, P.E. & L.S.

Date: 4/16/2020 Reg. No. 5594

My license renewal date is December 31, 2021

SEAL



List Corners to be Indexed			
Corners	Section	Twp	Range
NE	3	74N	19W

pd. \$7.00 - cash, Ret Abie Davis

Dug hole 10'x20" at Points indicated by Line & measurements From West, North & South. Found No evidence of Corner. Which was likely Destroyed by Road excavation, as the Center of Highway was Formerly Located Here

Reestablished Corner on Proportional Distances From stones North, South & West, & on Line with old Established Fence Lines to North & East.

Set c.m. over 2" Tile on END,
c.m. 12" Deep
Put Rock over c.m.

N. E. Cor 3-74-19

Set - 6-19-41

Notes: Wignall

