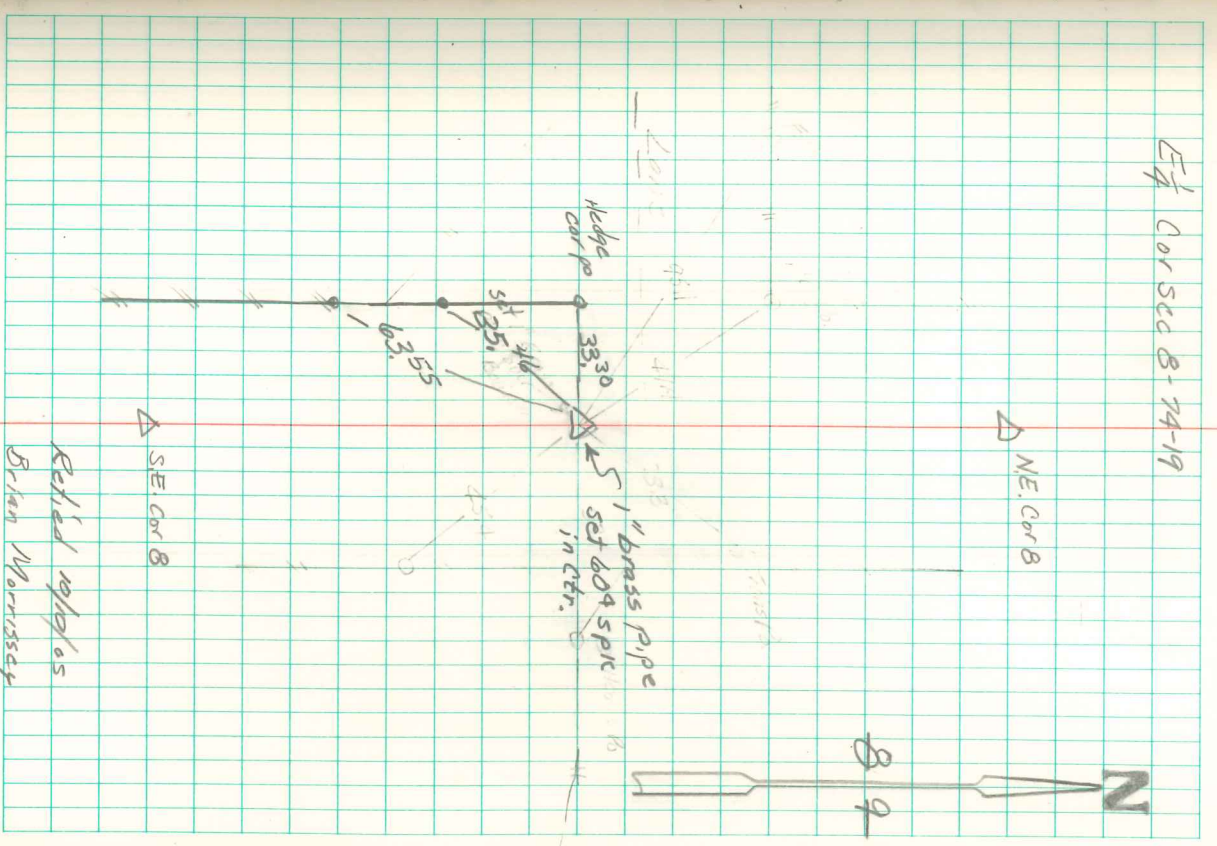


ET 1/4 Cor Sec 8-74-19

NE Cor 8

SE Cor 8

Retired geologist
Brian Morrissey



Found 4" Iron Pin over Huge Granite Boulder. Said Iron Pin was directly on line between N.E. Cor & S.E. Cor. Sec. 8-74-19.

Set 1" Brass Pipe over Boulder 12-16-54 by R.A. Dinson