



Document 20-3685

Book 2020 Page 3685 Type CORNR Pages 1
Date 7/13/2020 Time 11:13 AM
Rec Amt \$7.00

KAREN SCHWANEBECK, RECORDER
MARION COUNTY IOWA

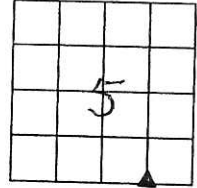
Prepared by Abie C. Davis, P.E. & L.S., 1428 Oregon St., Knoxville, IA 50138 (641) 842-5863

UNITED STATES PUBLIC LAND SURVEY CORNER CERTIFICATE

OF
Land survey Monuments situated in Section 5, Township 74N, Range 19W, of the Fifth Principal Meridian, Marion County, Iowa.

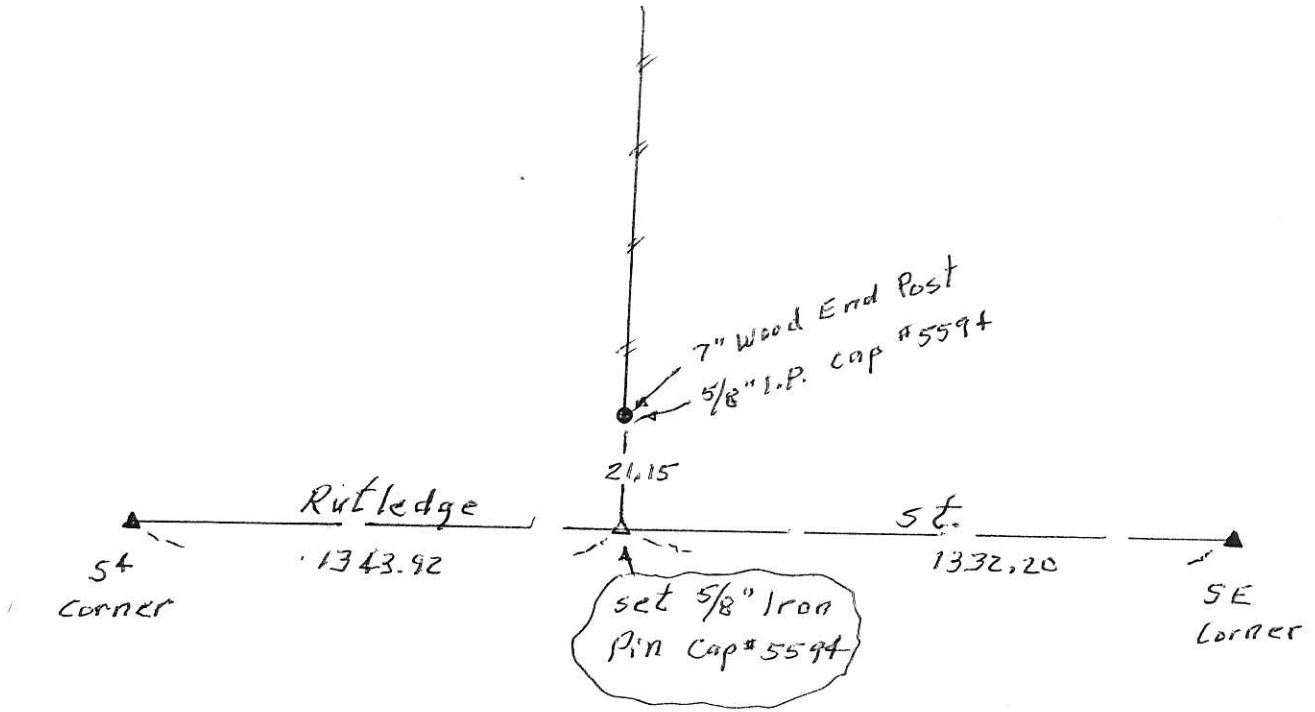
Previously recorded in N/A in County Recorders Office.
Show reason for preparing this certificate, the evidence and detailed procedures used in establishing the corner positions and monumentation found or placed (book, page, document number, etc.)

Monument Description and Remarks: set corner on
line between the SW corner & the SE
corner & in line with old property line
fence north



PLAN - VIEW

(Show a minimum of three reference ties to durable physical objects, relevant monuments and physical conditions that will enable recovery of the corner.)



I hereby certify that the survey work was completed and this land surveying document was prepared by me or under my direct personal supervision and that I am a duly licensed land surveyor under the laws of the state of Iowa

Signature: Abie C. Davis

Abie C. Davis, P.E. & L.S.
Reg. No. 5594

Date: 7/13/20

My license renewal date is December 31, 2021

SEAL



List Corners to be Indexed
Corners Section Twp Range

SE Corn 5 74N 19W
SW+SE+

Pol \$7.00 CASH - Ret Abie Davis