



Document 20-5382

Book 2020 Page 5382 Type CORNR Pages 1
Date 9/21/2020 Time 12:44 PM
Rec Amt \$7.00

KAREN SCHWANEBECK, RECORDER
MARION COUNTY IOWA

Prepared by Abie C. Davis, P.E. & L.S., 1428 Oregon St., Knoxville, IA 50138 (641) 842-5863

UNITED STATES PUBLIC LAND SURVEY CORNER CERTIFICATE OF

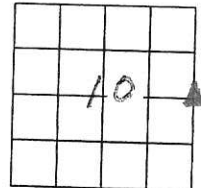
Land survey Monuments situated in Section 10, Township 74N, Range 20W of the Fifth Principal Meridian, Marion County, Iowa.

Previously recorded in Bk 1, Page 27 in County Recorders Office.

Show reason for preparing this certificate, the evidence and detailed procedures used in establishing the corner positions and monumentation found or placed

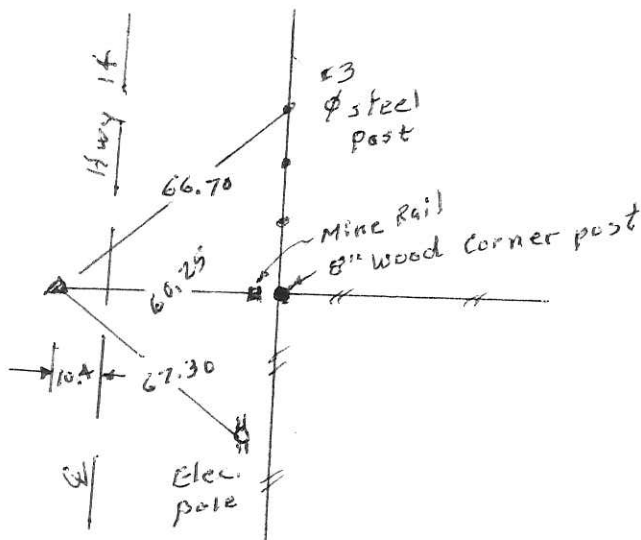
Monument Description and Remarks: Previous PK

nail was covered by new asphalt.
set new PK nail from old ties & set out
new ties.



PLAN - VIEW

(Show a minimum of three reference ties to durable physical objects, relevant monuments and physical conditions that will enable recovery of the corner.)



I hereby certify that the survey work was completed and this land surveying document was prepared by me or under my direct personal supervision and that I am a duly licensed land surveyor under the laws of the state of Iowa

Signature: Abie C. Davis
Abie C. Davis, P.E. & L.S.
Date: 9/16/2020 Reg. No. 5594

My license renewal date is December 31, 2021

SEAL



List Corners to be Indexed			
Corners	Section	Twp	Range
E4	10	74N	20W

Pol # 700 CASH - Ret Abie Davis

Found $\frac{1}{2}$ " By 20" long Iron rod.
Retied Jan. 1959 A. Davis

Set C.M. over 1-2" round tile
Put a lime rock 12" x 6" x $\frac{1}{4}$ " over
top C.M.

E $\frac{1}{4}$ Cor. 10-74-20

Set Aug-12-1941

Party: Wells, Glass, Ford Notes: Kennedy

