



Document 19-2108

Book 2019 Page 2108 Type CORNR Pages 1
Date 5/30/2019 Time 10:21 AM
Rec Amt \$7.00

KAREN SCHWANEBECK, RECORDER
MARION COUNTY IOWA

Prepared by Abie C. Davis, P.E. & L.S., 1428 Oregon St., Knoxville, IA 50138 (641) 842-5863

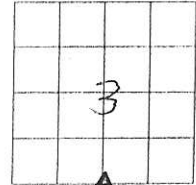
UNITED STATES PUBLIC LAND SURVEY CORNER CERTIFICATE OF

Land survey Monuments situated in Section 3, Township 74N, Range 20W, of the Fifth Principal Meridian, Marion County, Iowa.

Previously recorded in N/A in County Records Office.

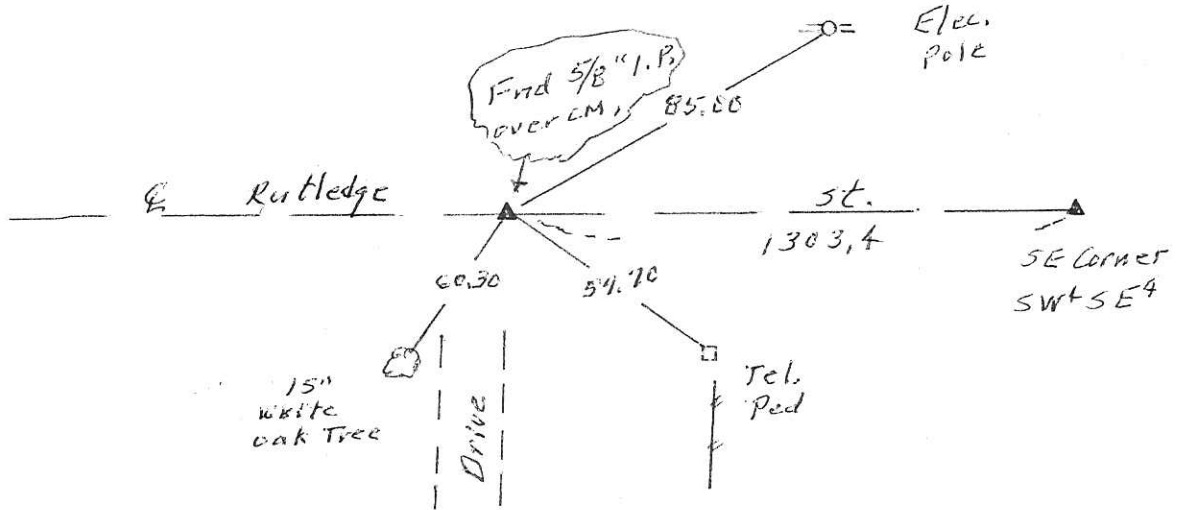
Show reason for preparing this certificate, the evidence and detailed procedures used in establishing the corner positions and monumentation found or placed

Monument Description and Remarks: Find 5/8" Iron Pin
OVER C.M.



PLAN - VIEW

(Show a minimum of three reference ties to durable physical objects, relevant monuments and physical conditions that will enable recovery of the corner.)



I hereby certify that the survey work was completed and this land surveying document was prepared by me or under my direct personal supervision and that I am a duly licensed land surveyor under the laws of the state of Iowa

Signature: Abie C Davis

Abie C. Davis, P.E. & L.S.

Date: 5/29/19 Reg. No. 5594

My license renewal date is December 31, 2019

SEAL



List Corners to be Indexed

Corners	Section	Twp	Range
SE Corner	3	74N	20W

RD \$700 Cash - Ret Abie Davis

Found granit rock 18"-12"-3" on
south side of rock was inch
gas pipe 31 inches long.

Set Mon. where we found
granit rock. Put gas pipe on
North side mon. Rock on top
Mon. 6" under surface.

NK4 Cor. 10-74-20

Set 7-31-41

Party: Kennedy,
Shore, Luther.

Notes: Kennedy

N

