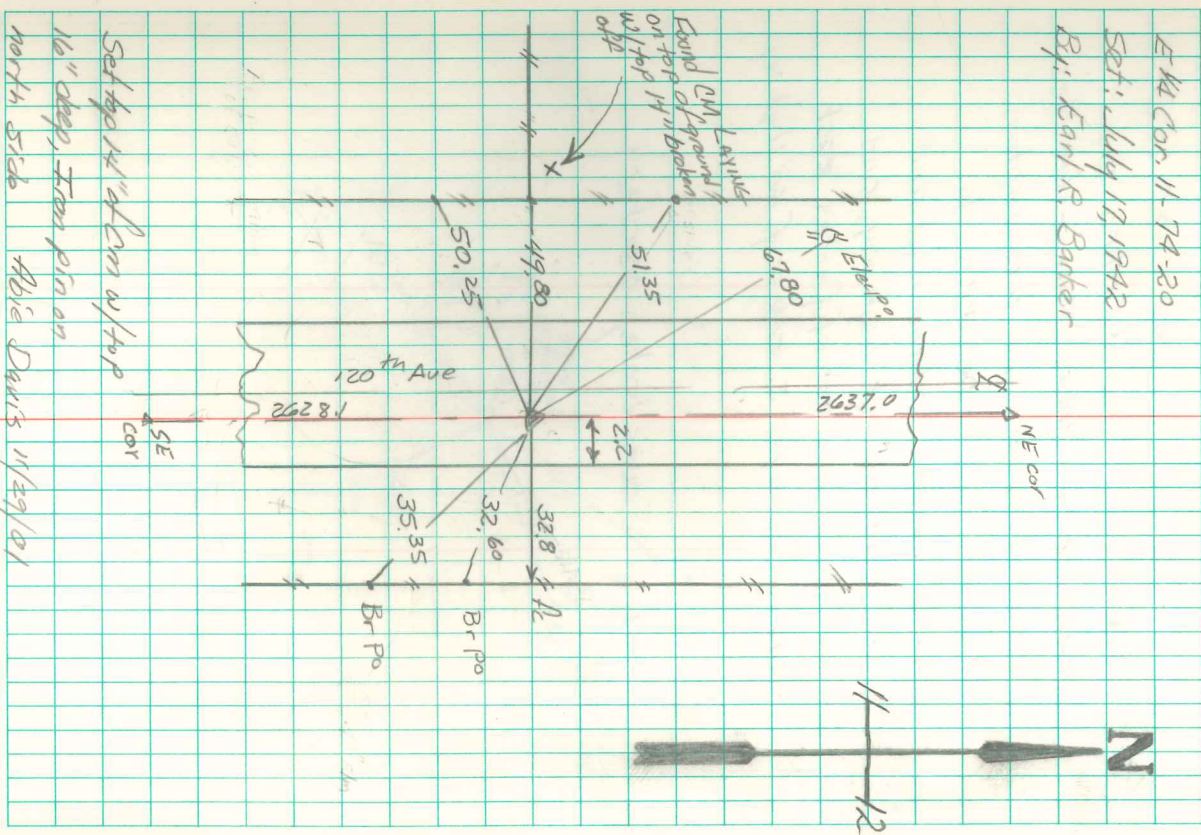


Ran the line N. & S. between sec. corners. At mid point in line with fence west, dug hole 10' x 16' x 3' deep. This point is in a road fill and has been washed out at times by ditch water from N.E., which probably destroyed corner. Corner was set in 1882 by W.L. Watkins in 3' road fill. Re-established corner July 17, 1942 and set 2' oak stake over broken glass, and 4" x 8" x 15" stone on N. side of stake, on direct line between sec. corners.

Note: CM to be set at this true corner after proposed construction is completed.

EW Cor. 11. 74-20  
 Set: July 17, 1942  
 By: Earl R. Banker



Set top 1/4" CM w/top  
 16" deep, from pin on  
 north side  
 Abie Davis 11/29/01