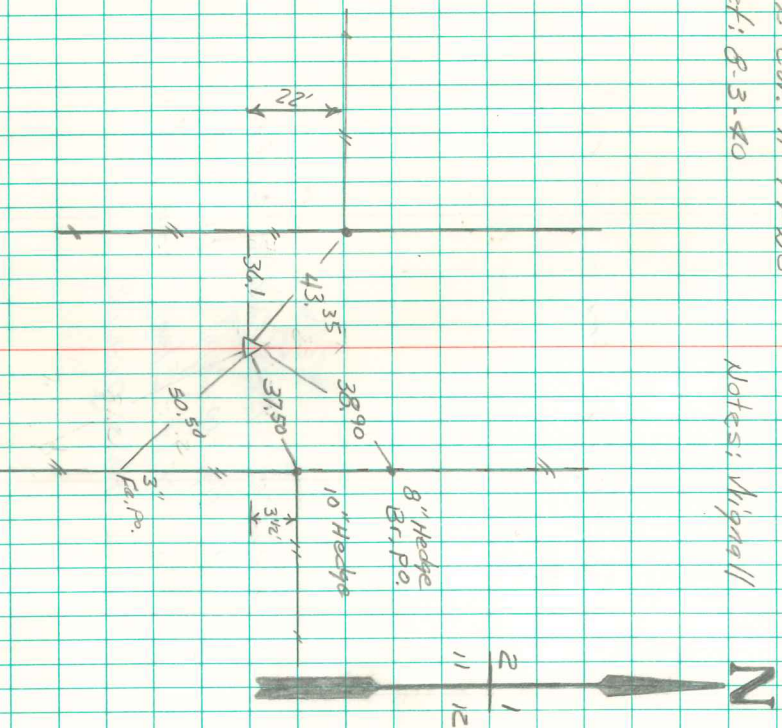


Found large Granite rock
 16" X 11" X 11"

Plumbed rock and lowered in
 orig. position and set 2m. over it.
 2m 12" below surface

N.E. Cor. 11-24-20
 Set: 8-3-40

Notes: Wright



Find 60° spk
 over iron pin over cons. Man.
 Abbie Davis 11/29/01