

Prepared by: Abie C. Davis, P.E. & L.S., 1428 Oregon St., Knoxville, Iowa 50138 Phone: (515) 842-5863

UNITED STATES PUBLIC LAND SURVEY CORNER CERTIFICATE SL519-92

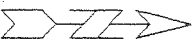
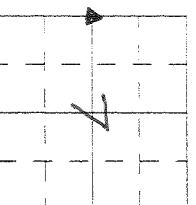
Land survey Monuments situated in Section 7, Township 74 N, Range 19 W, of the Fifth Principal Meridian, Marion County, Iowa.

Previously recorded in N/A in County Recorders Office.

Show reason for preparing this certificate, the evidence and detailed procedures used in establishing the corner positions and monumentation found or placed

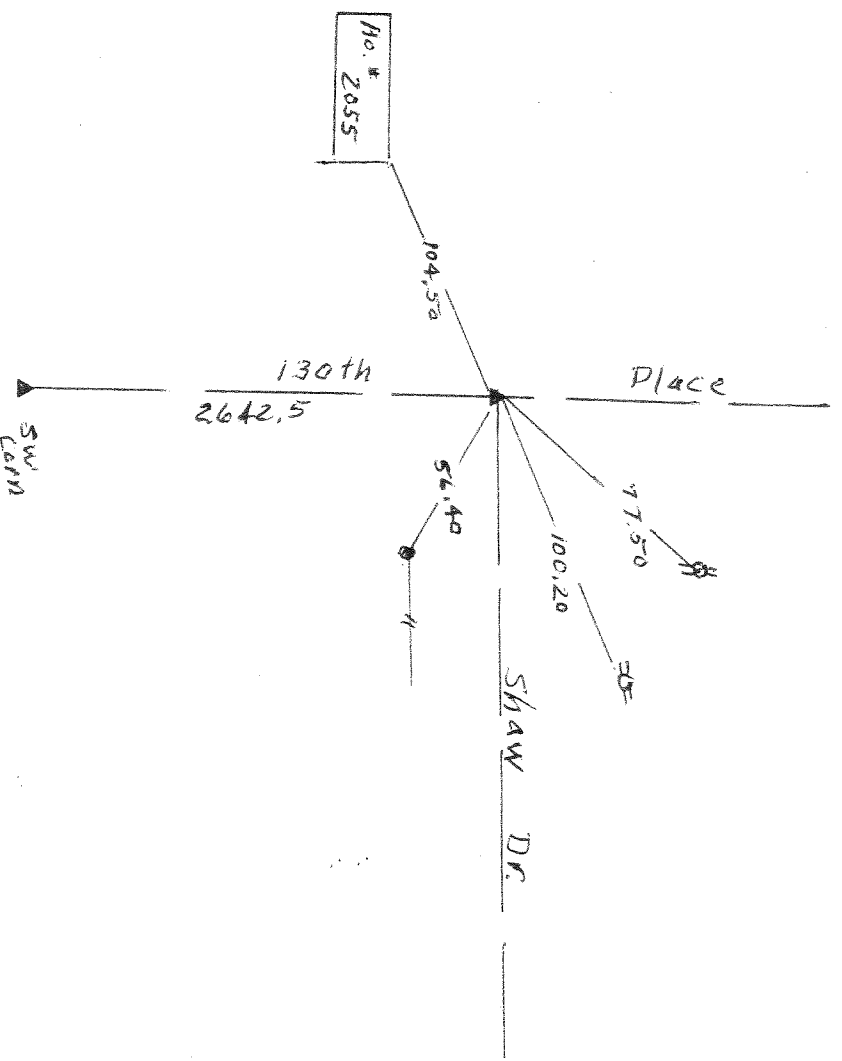
Monument Description and Remarks: Found Iron Pin 3"

deep over conc. Men. Set out ties



PLAN - VIEW

(Show a minimum of three reference ties to durable physical objects, relevant monuments and physical conditions that will enable recovery of the corner.)



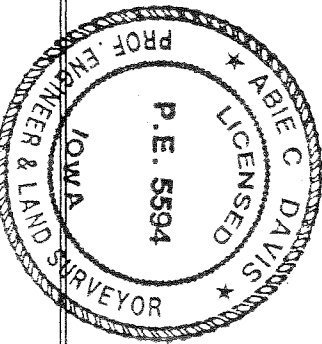
I hereby certify that the survey work was completed and this land surveying document was prepared by me or under my direct personal supervision and that I am a duly licensed land surveyor under the laws of the state of Iowa

Signature: Abie C. Davis
Abie C. Davis, P.E. & L.S.

Date: 8/15/14 Reg. No. 5594

My license renewal date is December 31, 2015

SEAL



List Corners to be Indexed
Corners Section TWP Range
N 4 Sec. 7 T4N R9W

Found 2 sandstone 1-broken. One
 15" x 14" x 3" over 1-3" drain tile on end.

lowered 3" drain tile in orig.
 position and set 2M Stones on
 North side 2M 6" Deep
 2M 12" below surface.

E 1/4 Cor. 12-24-20
 Set 7-22-20

Notes: Whigall

