

KAREN SCHWANEBECK, RECORDER  
MARION COUNTY IOWA

IOWADOT Prepared by: Craig J. Steffensmeier c/o Iowa Department of Transportation, 307 W. Briggs Ave., Fairfield, IA 52556 Phone: 800-766-4368

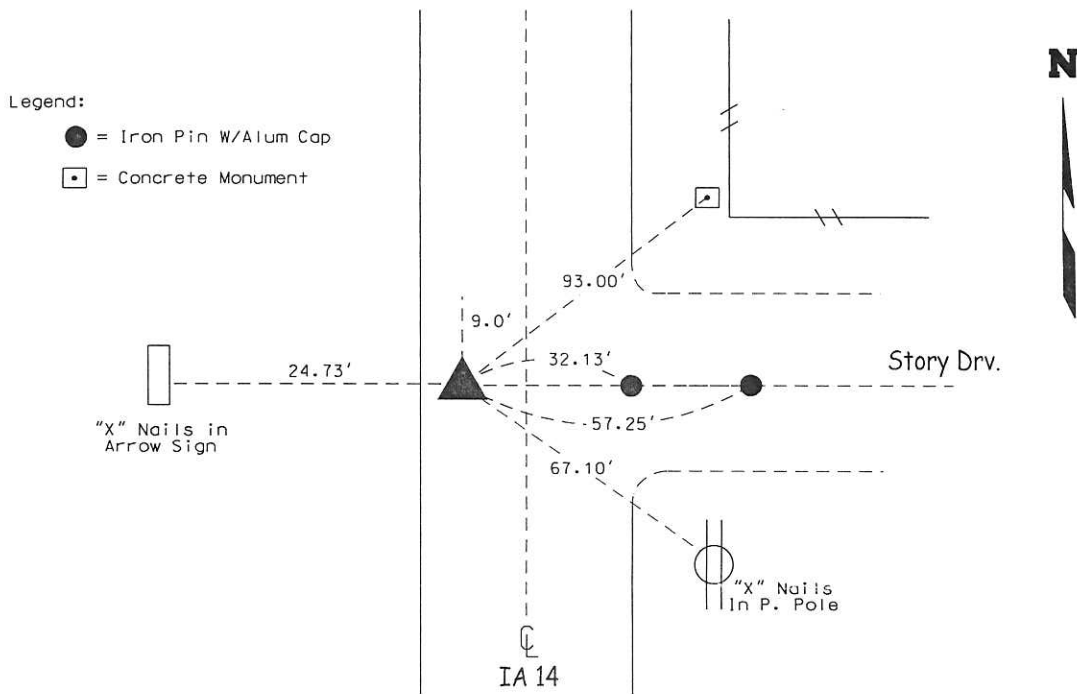
### UNITED STATES PUBLIC LAND SURVEY CORNER CERTIFICATE

For Land Survey Monuments situated in Section 11, Township 74N, Range 20W  
of the Fifth Principal Meridian, Marion County, Iowa.  
Previously recorded in Book 1, Page 124 in the County Recorder's Office.

#### Documentation and Remarks

FOR THE PURPOSE OF MONUMENTING LOCATIONS OF CORNERSTONES DESTROYED DURING THE I.D.O.T. H.M.A. RESURFACING AND MILLING PROJECT STP 014-2(33)--2C-59. THIS CORNER WAS RECOVERED AND RESET BY THE I.D.O.T. CHARITON CONSTRUCTION OFFICE. THREE REMAINING TIES AGREED WELL WITH THE PREVIOUS CERTIFICATE. THE CORNER CERTIFICATE WAS PREPARED BECAUSE THE CORNER MONUMENT WAS REPLACED OR MODIFIED.

#### PLAN VIEW



#### SET BRASS SURVEY DISK #15216 IN A.C.C. PVMT

All distances are shown in feet and decimals thereof and are horizontal measurements unless otherwise noted.

#### Corner to be Indexed

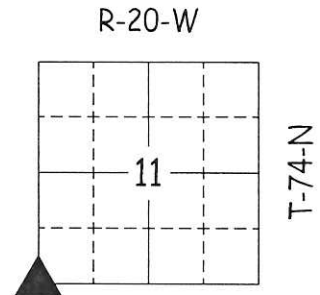
Corner	Section	Township	Range
SW CORNER	11	74N	20W



I hereby certify that this land surveying document was prepared and the related survey work was performed by me or under my direct personal supervision and that I am a duly licensed Land Surveyor under the laws of the State of Iowa.

*Craig J. Steffensmeier* 5/3/2017  
Craig J. Steffensmeier, R.L.S. License number: 15216  
My license is subject to renewal on December 31, 2017.  
Pages or sheets covered by this seal: This sheet only

VP



1-1

*Chg # 17- Iowa DOT & Return*

Found Inch Iron rod 3ft long.  
 We took rod out and dug deeper,  
 and found ear rock 6" under  
 top surface.

We left rock in place. Put 2-2"  
 horseshoe tile standing on end on  
 top rock, 5" dirt on top tile then  
 set Mon.

Iron rod on North side Mon.  
 Top Mon. 14" under surface.  
 We put sand stone on top mon.  
 the top stone 2" under surface.

NE Cor 15-74-20

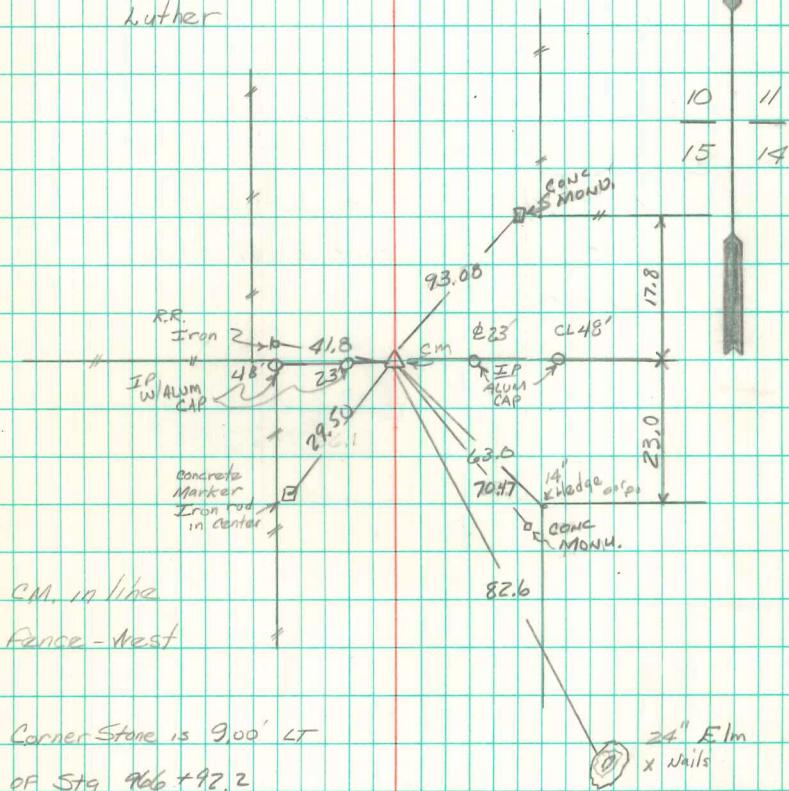
Set 8-12-41

Natas Kennedy

Party: Kennedy

Shore

Luther



cm. in like

Fence - West

Corner Stone is 9.00' LT

of Sta 966 + 97.2

FOUND & Retied  
 BY I. D. P. T.  
 July 24, 1985