

2018-4130

Prepared by Abie C. Davis, P.E. & L.S., 1428 Oregon St., Knoxville, IA 50138 (641) 842-5863

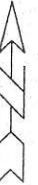
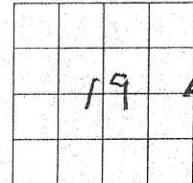
UNITED STATES PUBLIC LAND SURVEY CORNER CERTIFICATE

OF
Land survey Monuments situated in Section 19, Township 74N, Range 20W, of the Fifth Principal Meridian, Marion Co. County, Iowa.

Previously recorded in N/A in County Recorders Office.

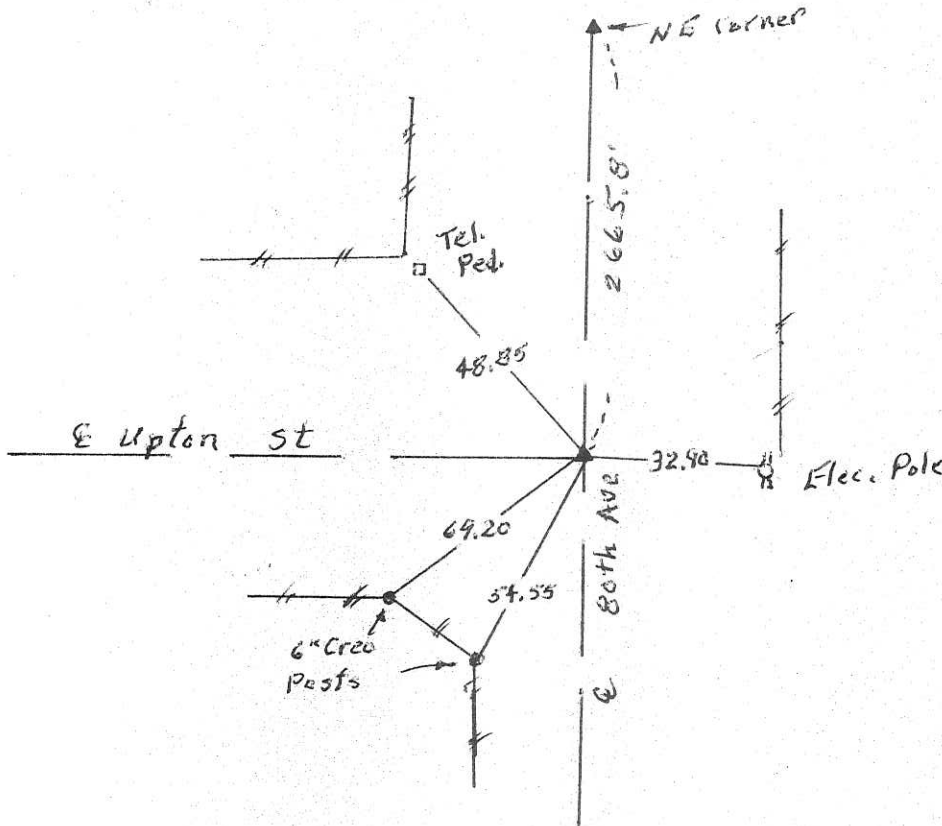
(book, page, document number, etc.)
Show reason for preparing this certificate, the evidence and detailed procedures used in establishing the corner positions and monumentation found or placed.

Monument Description and Remarks: Fnd 1/2 Iron Pin
over C.M.



PLAN - VIEW

(Show a minimum of three reference ties to durable physical objects, relevant monuments and physical conditions that will enable recovery of the corner.)



I hereby certify that the survey work was completed and this land surveying document was prepared by me or under my direct personal supervision and that I am a duly licensed land surveyor under the laws of the state of Iowa

Signature: Abie C. Davis
Abie C. Davis, P.E. & L.S.

Date: 9/24/18 Reg. No. 5594

My license renewal date is December 31, 2019

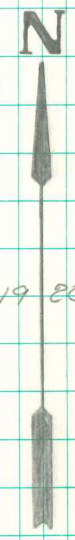
SEAL



List Corners to be Indexed			
Corners	Section	Twp	Range
E4	19	74N	20W

E 1/4 Cor. 19-74-20
Set: 6-8-40
Nandell, Frazier, Harger

Notes: Arignall



Found 1-2" round tile and
fragments of another.

