

2018-4132

Prepared by Abie C. Davis, P.E. & L.S., 1428 Oregon St., Knoxville, IA 50138 (641) 842-5863

### UNITED STATES PUBLIC LAND SURVEY CORNER CERTIFICATE

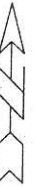
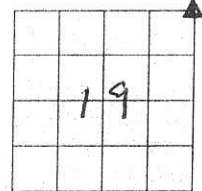
OF

Land survey Monuments situated in Section 19, Township 74N, Range 20W, of the Fifth Principal Meridian, Marion County, Iowa.

Previously recorded in N/A in County Recorders Office.

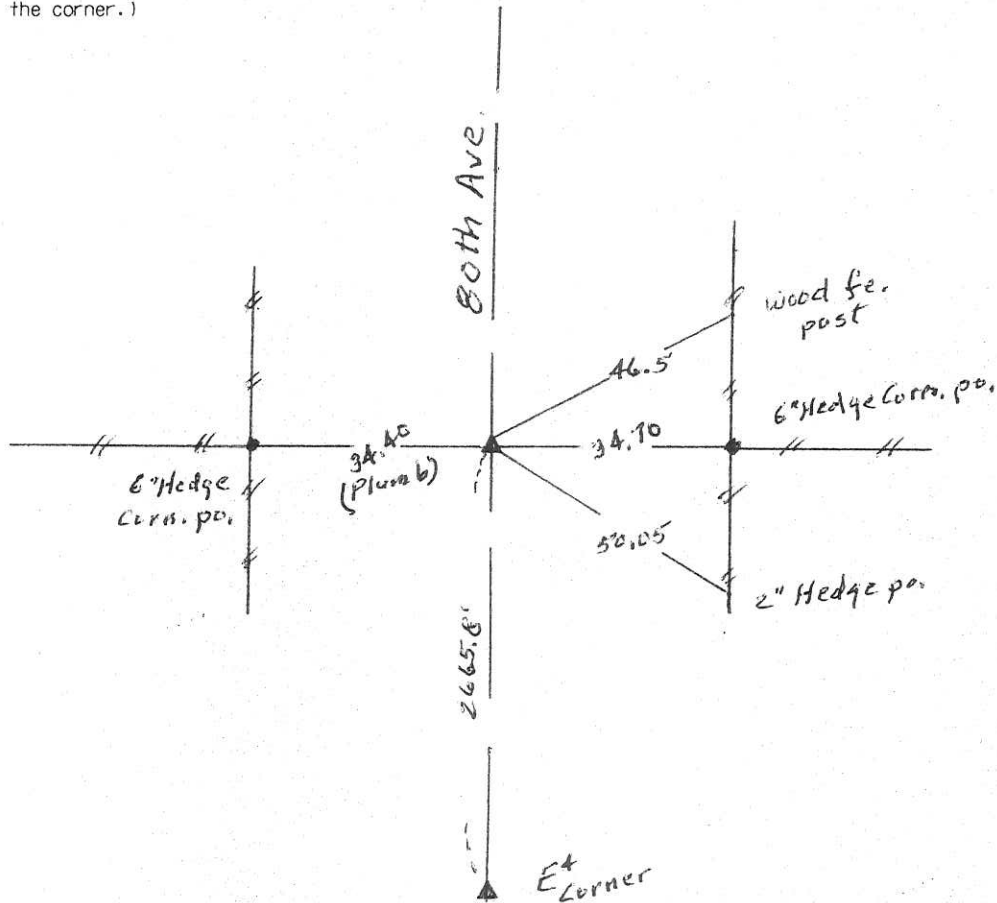
Show reason for preparing this certificate, the evidence and detailed procedures used in establishing the corner positions and monumentation found or placed

Monument Description and Remarks: Find Iron Pin over C.M.



### PLAN - VIEW

(Show a minimum of three reference ties to durable physical objects, relevant monuments and physical conditions that will enable recovery of the corner.)



I hereby certify that the survey work was completed and this land surveying document was prepared by me or under my direct personal supervision and that I am a duly licensed land surveyor under the laws of the state of Iowa

Signature: Abie C. Davis  
Abie C. Davis, P.E. & L.S.

Date: 9/24/18 Reg. No. 5594

My license renewal date is December 31, 2019

SEAL



List Corners to be Indexed			
Corners	Section	Twp	Range
NE	19	74N	20W

Set C.M. over 1-round tile  
C.M. 12" below surface of ground

11-13-2009 FOUND MONUMENT 8" BELOW SURFACE.  
SET IRON NAIL FLUSH WITH THE SOUTH  
SIDE OF MONUMENT & RE-TIED

IOWA STATE PLAIN SOUTH (NAD83) COORDINATES

N: 439001.509'

E: 1724476.963'

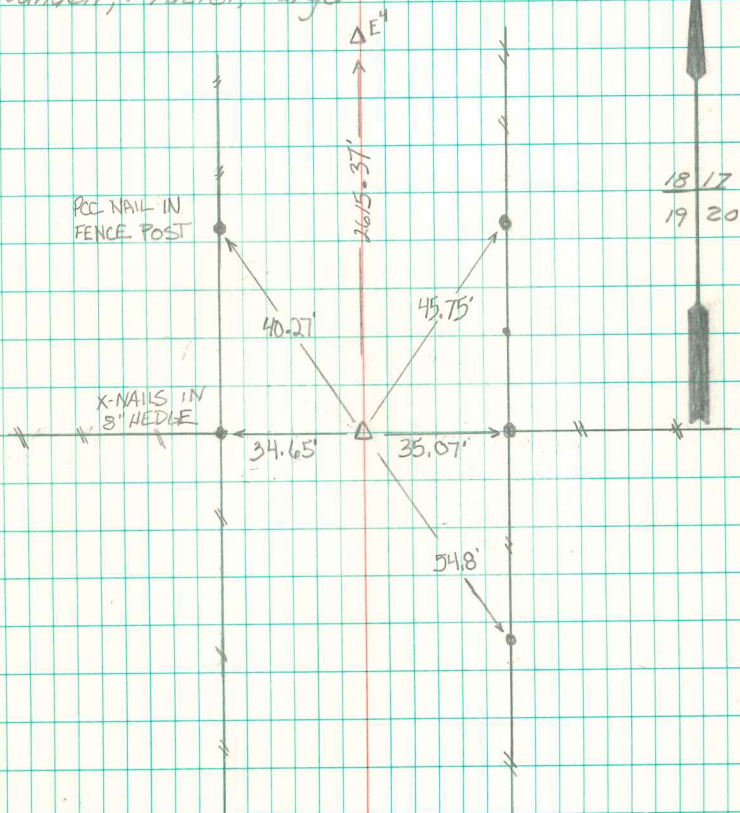
ELEV: 866.86'

N. E. Cor. 19-74-20

Set: 6-8-40

Nandell, Frazier, Harger

Notes: Nignall



11-13-09 FOUND &  
RE-TIED  
D-MORGAN &  
B. HATCH