

Instr. Number: 22-3267  
 BK: 2022 PG: 3267  
 Recorded: 6/17/2022 at 9:37:49.0 AM  
 County Recording Fee: \$7.00  
 Iowa E-Filing Fee: \$3.00  
 Combined Fee: \$10.00  
 Revenue Tax:  
 NAOMI ELLIS, RECORDER  
 Marion County, Iowa

RETURN TO: DANIELS LAND SURVEYING, 22470 18TH LANE, NEW VIRGINIA IA 50210 (515) 577-2583

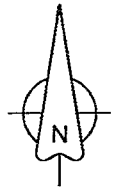
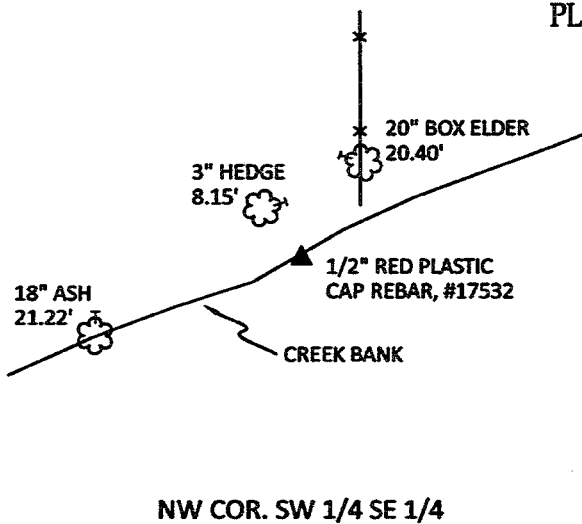
UNITED STATES PUBLIC LAND CORNER CERTIFICATE

Land Survey Monuments in Section 17, Township 74 North, Range 20 West of the 5th P.M., Marion County, Iowa.  
 Previously recorded in n.a. in the County Recorder's Office

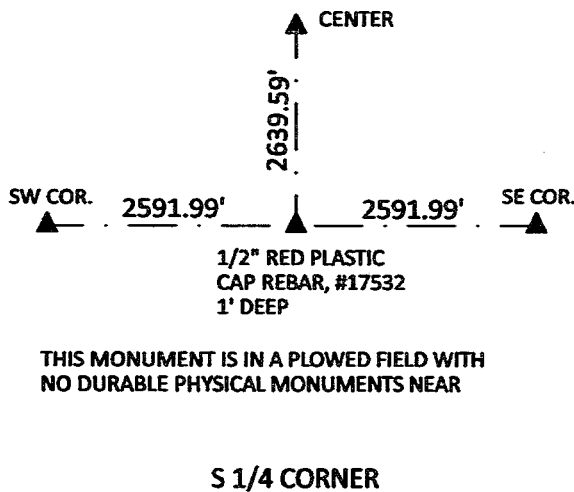
MONUMENT DESCRIPTIONS AND REMARKS:

NW COR. SW 1/4 SE 1/4 - Set midpoint and online between found Center and S 1/4 Corner. S 1/4 CORNER - Set midpoint and online between SW and SE Corners. SE CORNER - Found concrete monument 30" deep, all prior ties and pin PLS #5594 set on top had been dozed out. Set 1/2" x 24" red plastic cap rebar, #17532 on top of monument.

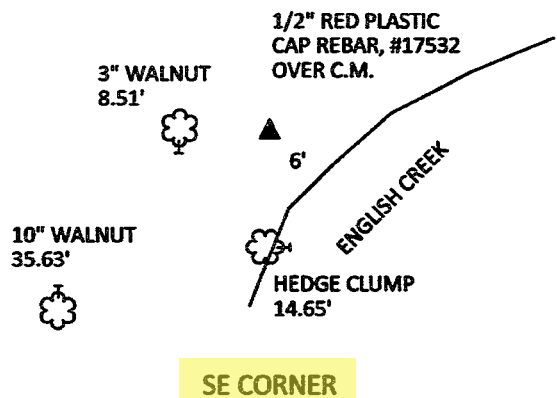
PLAN VIEW



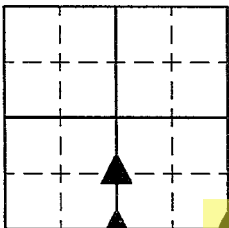
FURTHER NOTE ON S 1/4 CORNER - The WPA ties at the County Engineer's office indicate this monument was near the intersection of two hedge rows and fences and that the top of the monument was "above surface". These hedge rows and fences have been dozed out for quite a distance in all directions and this area is now a plowed field. I could not find any remnants of the monuments or the fences so I treated it as lost and reset a monument midpoint and online between the found section corners.



SET AN ORANGE FIBERGLASS STAKE NEXT TO MONUMENT TO AID IN LOCATION.



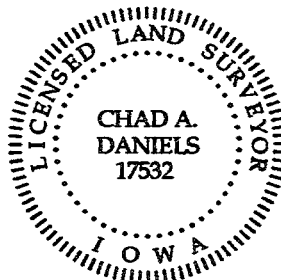
ALL TIES TO RING SHANK NAILS UNLESS NOTED



Section Number:

17

Project Number: 1785



I hereby certify that this surveying document was prepared by me and the related survey work was performed by me or under my direct personal supervision and that I am a duly licensed Professional Land Surveyor under the laws of the State of Iowa.

Signed Chad A. Daniels Date 14 JUN 22  
 Chad A. Daniels Date

Iowa License No. 17532  
 My license renewal date is 12-31-2022

Dug hole 6' x 40' along N $\frac{1}{4}$ S. Fence each way from point indicated by line and measurements. Found no evidence of corner.

I re-established corner at a point that is double the distance south from  $\frac{1}{4}$  Cor. 17 to old fc. line on  $\frac{1}{4}$  line, which is on line with division fence running west from the N $\frac{1}{4}$  Cor. of 21 to English Creek.

Set C.M. Marked  $\frac{17, 16}{20, 21}$  over crockery and tile, with hot red sandstone over C.M.

- 415 S. of fence west
- 1330.5 S. of  $\frac{1}{4}$  Cor. Fence
- 2661.0 S. of C.M.  $\frac{1}{4}$  Cor. 17
- 1.5 N.E. of X-nails in 18" elm on old fc. line
- 5.6 S.E. of X-nails in 20" Walnut
- 1.4 W. of woven wire fc.
- 32.7 N.W. of X-nails in 18" Elm
- 19.5 N.W. of leaning 20" Boxelder
- 56.0 N. of North bank English creek
- 50.0 W. of 2x4 oak stake

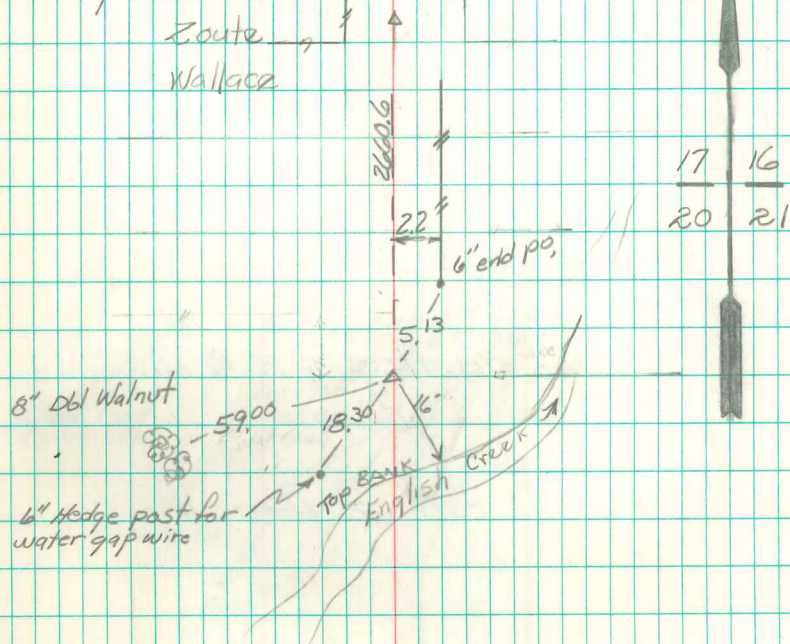
N.E. Cor. 20-74-20

Set Sept. 23-1942

Party: Barker

Zoute

Wallace



End Conc. Mon with Top 14" broken off. Re-set on base. Top now 14" below surface. Set steel on So. side C.M. 1" below surface. Set  $\frac{5}{8}$ " iron pin above C.M.  
CAP #5594 Abie Davis 2/13/04