

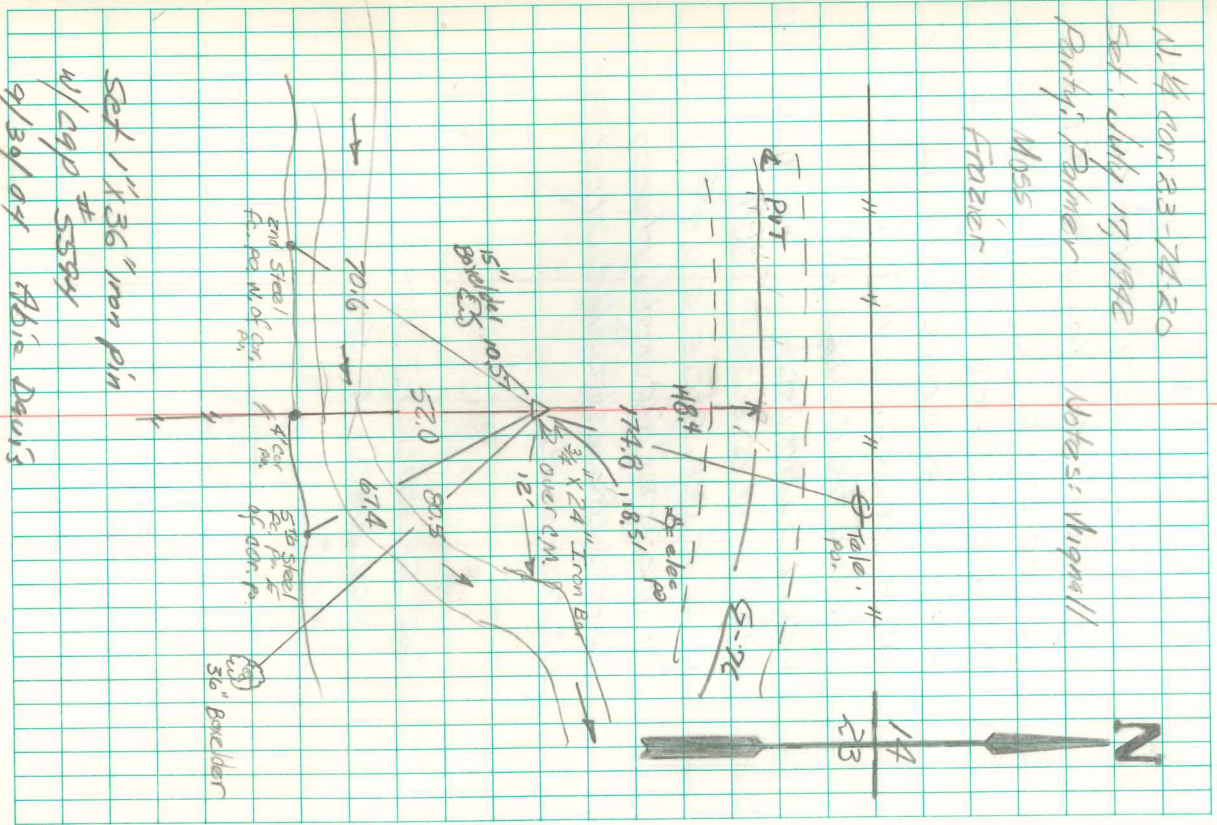
Dug hole 8'x6'x20', found no evidence as stone has been destroyed thru encroachment of stream, and construction of bridge. Re-established on direct line between See Carrers and in line with old established division fence running south.

Set c/m. over 1-2" tile. Put a sandstone 2"x10"x12" on top of c/m.

At 4/20/23-7/20/20  
Set July 17 1922  
Party: Palmer

Moss  
Fowler

Notes: Wignall



Set 1" x 3/16" iron pin  
w/ cap # 5584  
9/30/21 Abie Davis