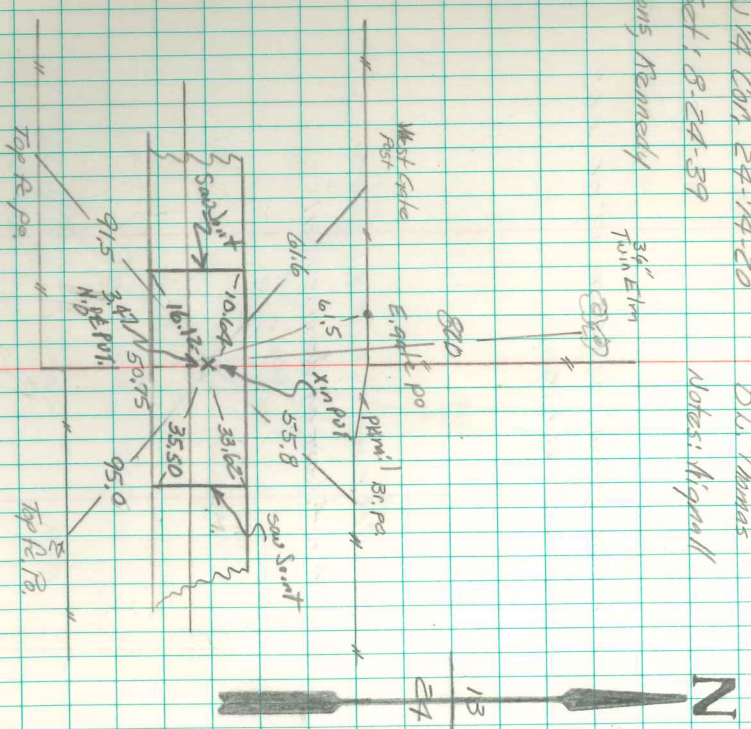


Found Stone 15" x 12" x 16" over 5' file
over 30' Ben Skipped boulder.

Set 2M over file mark. N.E.S.
Stones on north side 2M.

N 1/4 Cor 24-74-20
Set 18-24-39
Notes: Mignall
D.L. Thomas
34" Elm
Kenny Kennedy



Redd 6-6-66
Retred B. Miller R.L.S.
Feb-1979