

KAREN SCHWANEBECK, RECORDER  
MARION COUNTY IOWA

Prepared by Abie C. Davis, P.E. & L.S., 1428 Oregon St., Knoxville, IA 50138 (641) 842-5863

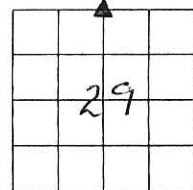
### UNITED STATES PUBLIC LAND SURVEY CORNER CERTIFICATE OF

Land survey Monuments situated in Section 29, Township 74N, Range 20W, of the Fifth Principal Meridian, Marion County, Iowa.

Previously recorded in N/A in County Recorders Office.  
(book, page, document number, etc.)

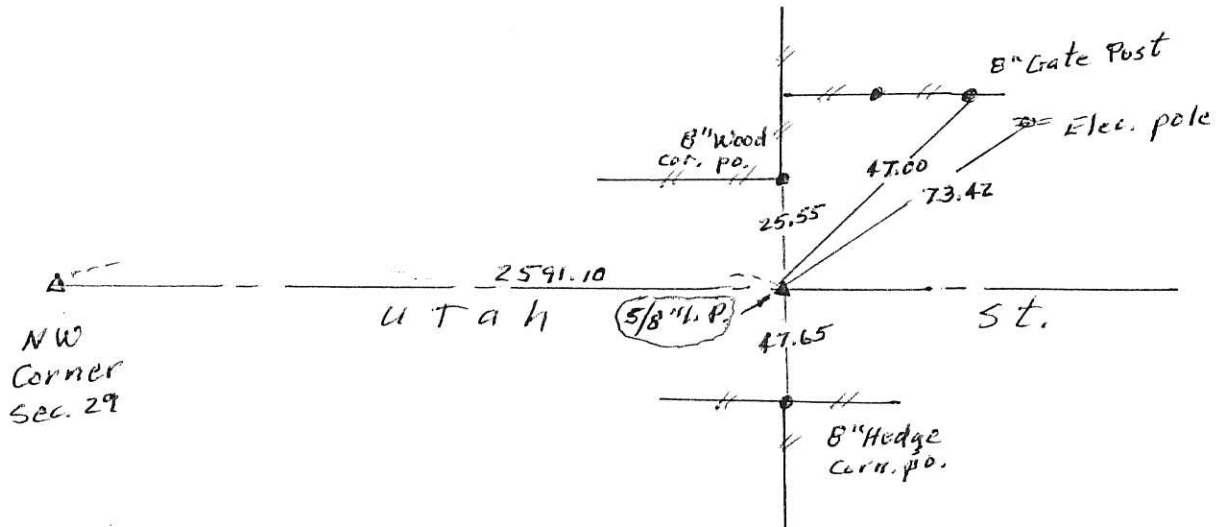
Show reason for preparing this certificate, the evidence and detailed procedures used in establishing the corner positions and monumentation found or placed

Monument Description and Remarks: Found 1/2" Iron Pin in position but bent. Replaced 1/2" pin with new 5/8" Iron Pin and set out new ties



### PLAN - VIEW

(Show a minimum of three reference ties to durable physical objects, relevant monuments and physical conditions that will enable recovery of the corner.)



I hereby certify that the survey work was completed and this land surveying document was prepared by me or under my direct personal supervision and that I am a duly licensed land surveyor under the laws of the state of Iowa

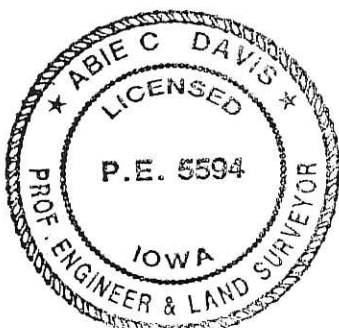
Signature: Abie C. Davis

Abie C. Davis, P.E. & L.S.

Date: 6/21/16 Reg. No. 5594

My license renewal date is December 31, 2017

SEAL



List Corners to be Indexed  
Corners Section Twp Range

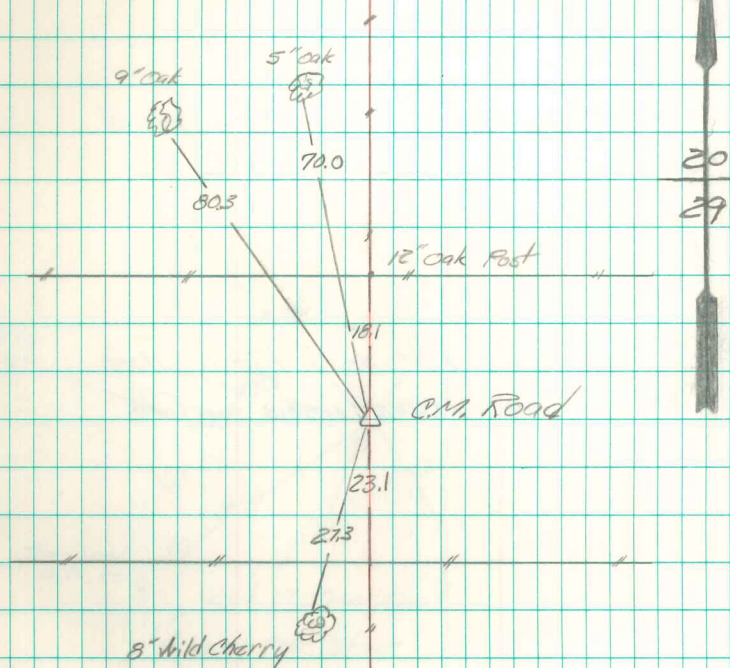
N4 29 74N 20W  
Corner

Pd \$700 Cash - Ret Abie Davis

N. 1/4 Cor. 29-74-20

Set: 8-22-40

Notes: Wignall



New Rd. built 66' wide

Established Cor.

Set C.M. ?