

KAREN SCHWANEBECK, RECORDER  
MARION COUNTY IOWA

Prepared by: Abie C. Davis, P.E. & L.S., 1428 Oregon St., Knoxville, Iowa 50138 Phone: (515) 842-5863

# UNITED STATES PUBLIC LAND SURVEY CORNER CERTIFICATE

SLS19-94

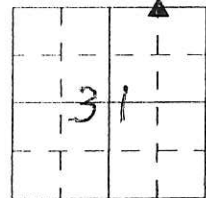
OF

Land survey Monuments situated in Section 31, Township 74N, Range 20W, of the Fifth Principal Meridian, Marion County, Iowa.

Previously recorded in N/A in County Recorders Office.

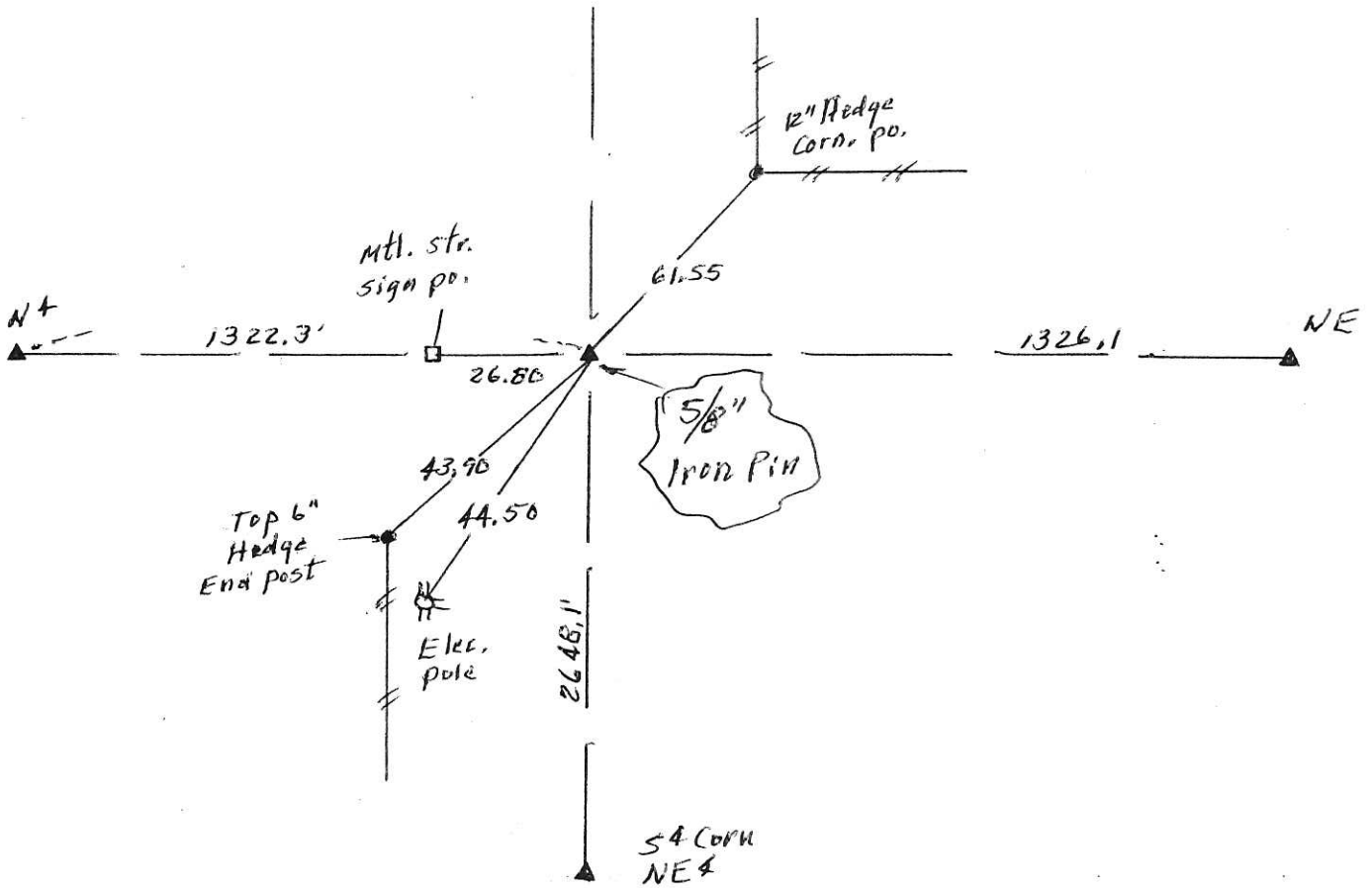
Show reason for preparing this certificate, the evidence and detailed procedures used in establishing the corner positions and monumentation found or placed

Monument Description and Remarks: Set 5/8" Iron Pin  
on line between NE Corner and the NE Corner  
and 33.00 ft. west of West R.D.W. fence so.  
on 78th Ave.



## PLAN - VIEW

(Show a minimum of three reference ties to durable physical objects, relevant monuments and physical conditions that will enable recovery of the corner.)



I hereby certify that the survey work was completed and this land surveying document was prepared by me or under my direct personal supervision and that I am a duly licensed land surveyor under the laws of the state of Iowa

Signature: Abie C. Davis  
Abie C. Davis, P.E. & L.S.

Date: 9/15/16 Reg. No. 5594

My license renewal date is December 31, 2017

### List Corners to be Indexed

Corners	Section	Twp	Range
NA Corner NE 4	31	74N	20W

SEAL



Pd \$700 Cash - Ret Abie Davis