

KAREN SCHWANEBECK, RECORDER
MARION COUNTY IOWA

Prepared by: Abie C. Davis, P.E. & L.S., 1428 Oregon St., Knoxville, Iowa 50138 Phone: (515) 842-5863

UNITED STATES PUBLIC LAND SURVEY CORNER CERTIFICATE

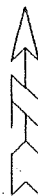
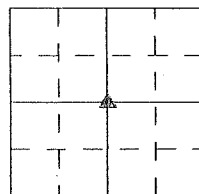
SLS19-94

Land survey Monuments situated in Section 34, Township 74N, Range 20W, of the Fifth Principal Meridian, Marion County, Iowa.

Previously recorded in N/A in County Recorders Office.

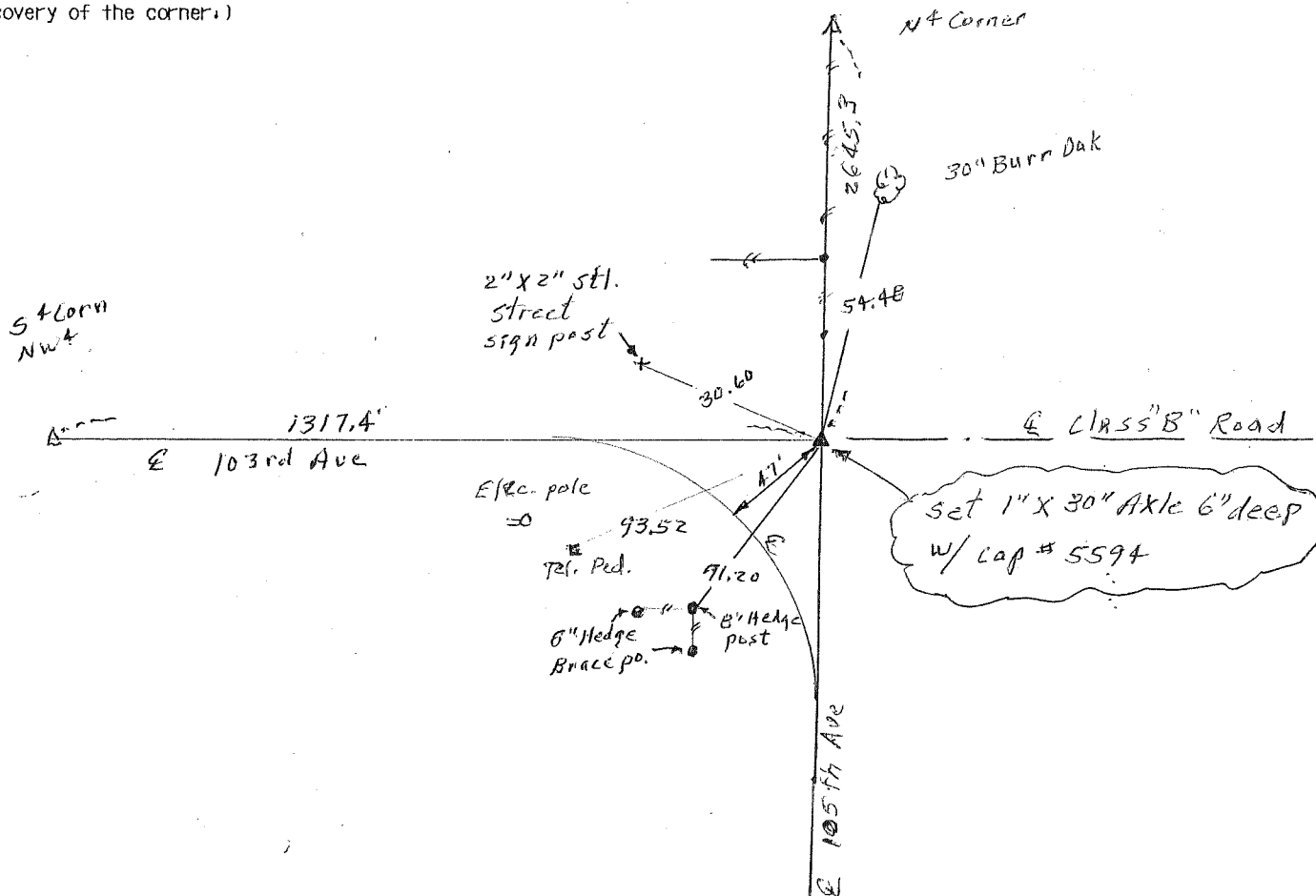
Show reason for preparing this certificate, the evidence and detailed procedures used in establishing the corner positions and monumentation found or placed

Monument Description and Remarks: set corner at P.I. of road west of road south and in line with old property line fence north.



PLAN - VIEW

(Show a minimum of three reference ties to durable physical objects, relevant monuments and physical conditions that will enable recovery of the corner.)



I hereby certify that the survey work was completed and this land surveying document was prepared by me or under my direct personal supervision and that I am a duly licensed land surveyor under the laws of the state of Iowa

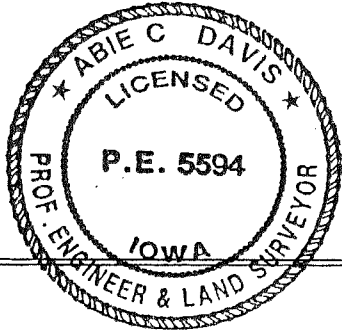
Signature: Abie C. Davis
Abie C. Davis, P.E. & L.S.

Date: 11/22/2013 Reg. No. 5594

My license renewal date is December 31, 2013

List Corners to be Indexed			
Corners	Section	Twp	Range
ctr.	34	74N	20W

SEAL



Pd \$7.00 Cash - Ret Abie Davis