

Dug hole 6' wide across road, found no evidence. Old residents stated the fence south was set on line when stone was in place. Ran the line between Sec. corners E. & N. & established cor. on line.

Re-established cor. on old Pence line 2642. West of Sec. corner. Set Mon. over broken crockery, granite rock 12"x8"x5" on top Mon.

Lucas-Marion Co. Line

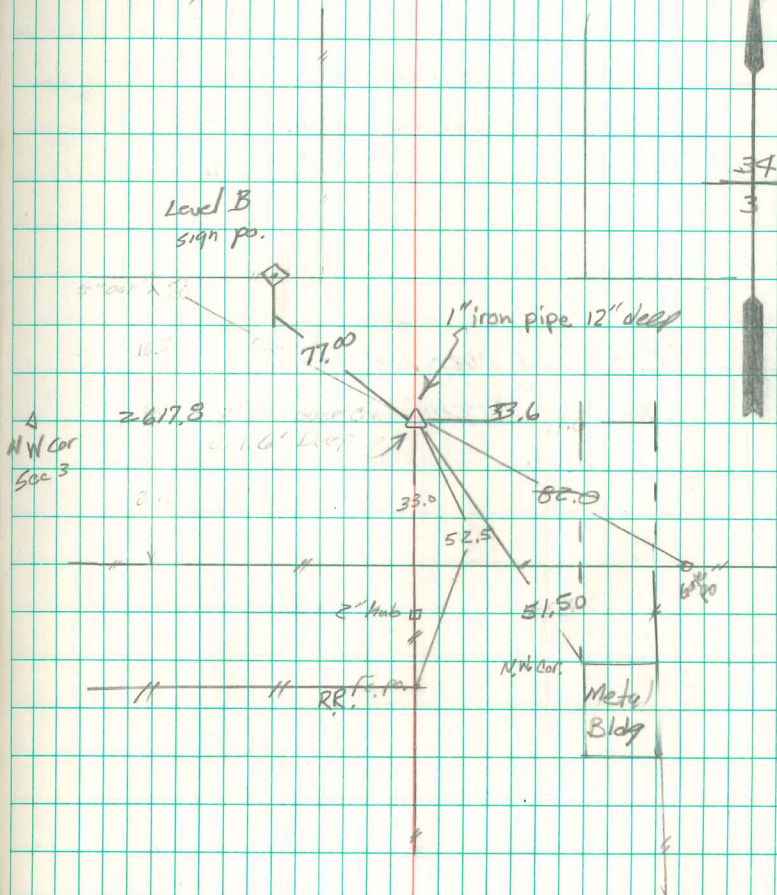
SW Cor, 34-74-20

Set: 8-14-41

Wells, Glass, Ford

Notes: Kennedy

N



Retied 9/3/05
Abie Davis