

Found N.J. Watkins witness stone  
and tile 49.5 south of true  
corner.

Set C.M. on true cor. Put a sand  
stone 10"x6"x4" over top c.m.

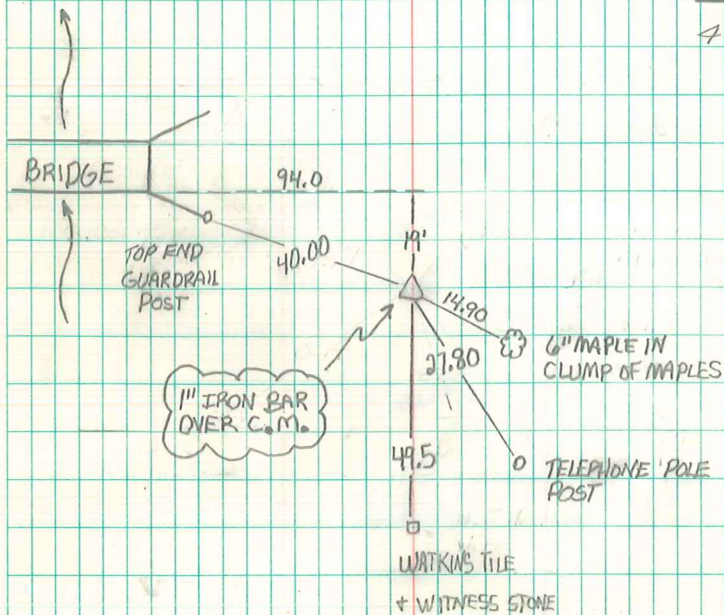
N.E. cor. 4-74-20

Set Aug. 1-1941

Party: Wells, Glass,  
Ford.

Notes: Kennedy

N

33 34  
4 3

RE-TIED 11/2/99

ABIE C. DAVIS