

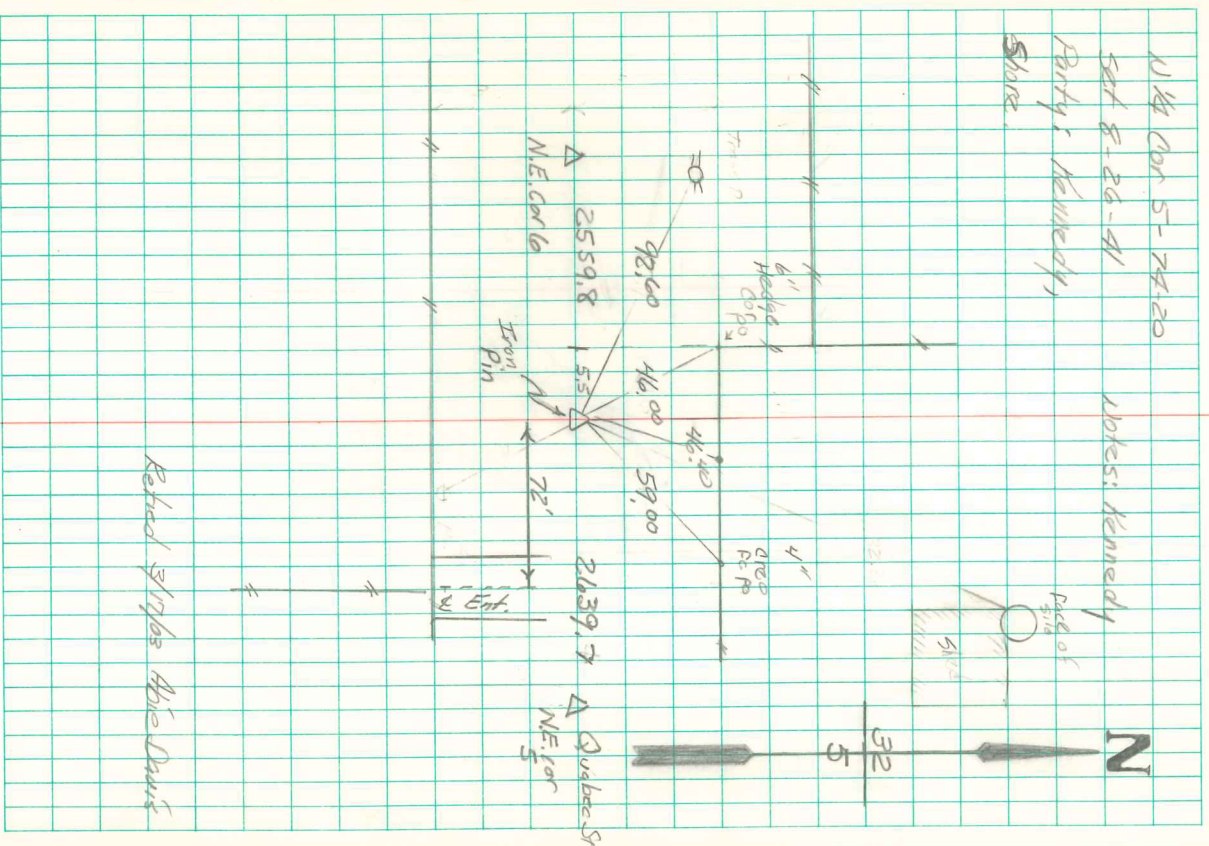
Reestablished cor.
 on right line 5.5' W.
 the dig hole 12' square 3'
 deep in a road cut. Found
 no evidence.

Set man over a little grant rock.
 Put a small sandstone on top man.
 top stone 3" under surface.
 2640 from stone east.
 2560 from stone west.

dig hole 6' x 6' x 8'
 found no evidence
 6/15/92

10/4 Nov 5 - 74:20
 Set 8-26-41
 Party: Kennedy,
 Shore.

Notes: Kennedy



Retired Styles Abie Davis