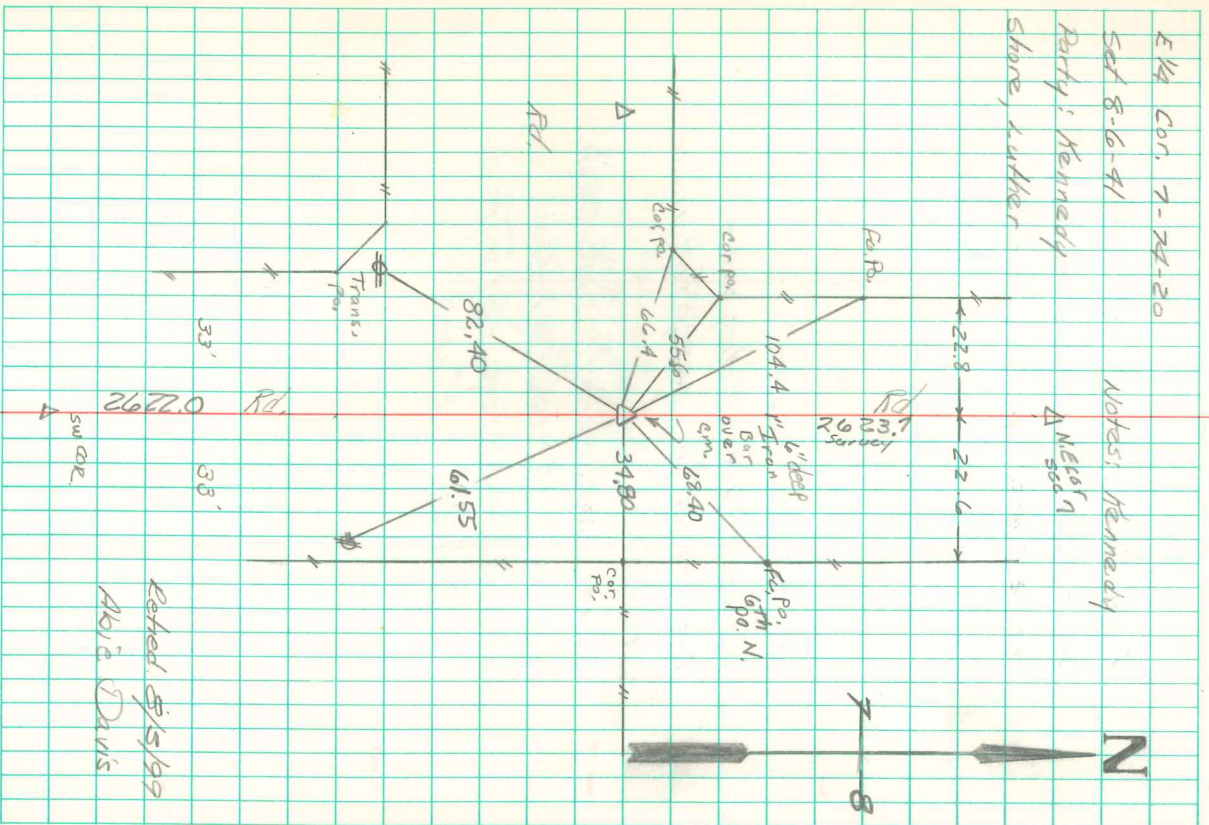


Found large granite rock 30" x 16" x 10".
 On N.W. cor of rock was an Inch Iron
 rod 21" long, right where we set Mon.

Set Mon over 1-2" horse shoe
 tile standing on end. Put Iron
 rod on North side Mon. Put rock
 on Top Mon.

E 1/4 Con. 7-24-20
 Set 8-6-41
 Party: Kennedy
 Shore, Lutter

Notes: Kennedy
 Δ NE 10' N



Ret'd 5/5/99
 Alvin Davis